



..... 1

..... 2

..... 2

..... 2

..... 3

..... 4

..... 4

..... 4

..... 5

..... 6

..... 8

..... 8

..... 8

..... 8

..... 9

..... 9

..... 9

..... 9

..... 9

..... 9

..... 9

..... 10

..... 12

..... 12

..... 13

..... 25

..... 25

..... 25

..... 26

..... 26

..... 26

..... 28

..... 28

..... 28

..... 28

..... 28

..... 29

..... 30

..... 30

..... 30

..... 30

..... 33

..... 34

1. 关

- 1) 5:6
- 2)

2.

( 实

3. 容

15 ) 40 , 70

4.

( ( ) , (

5. (

6. 6KV/10KV 实 ( /

7. R22 R134a R404A R507A R407C

8.

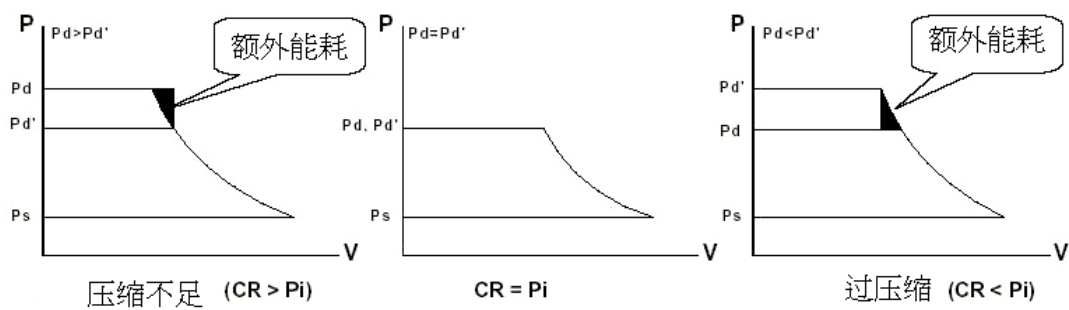
- 1) PTC NTC PT100 PT1000
- 2) PTC
- 3) INT69

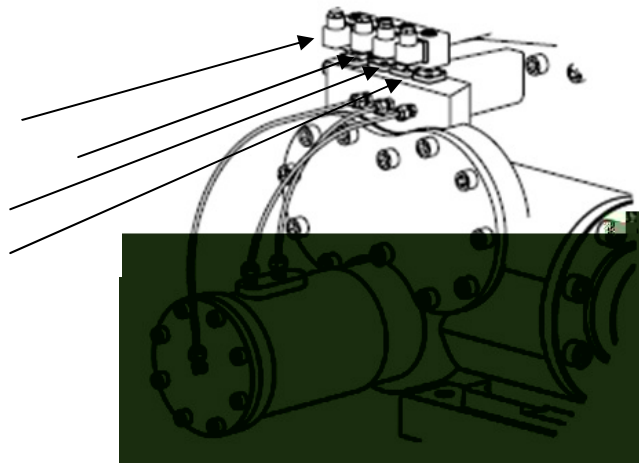
9.

- 1)
- 2)

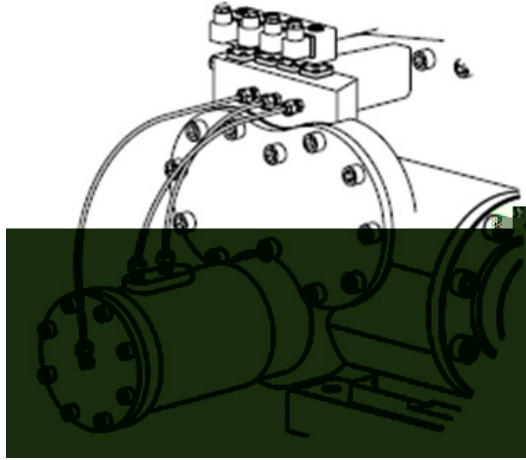










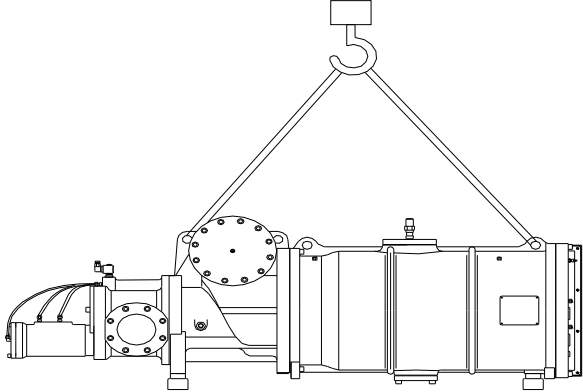





- 
- 
- 
- 
- 
- 
- 

- 
- 
- 

- 
- 



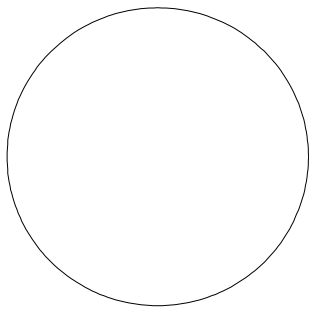
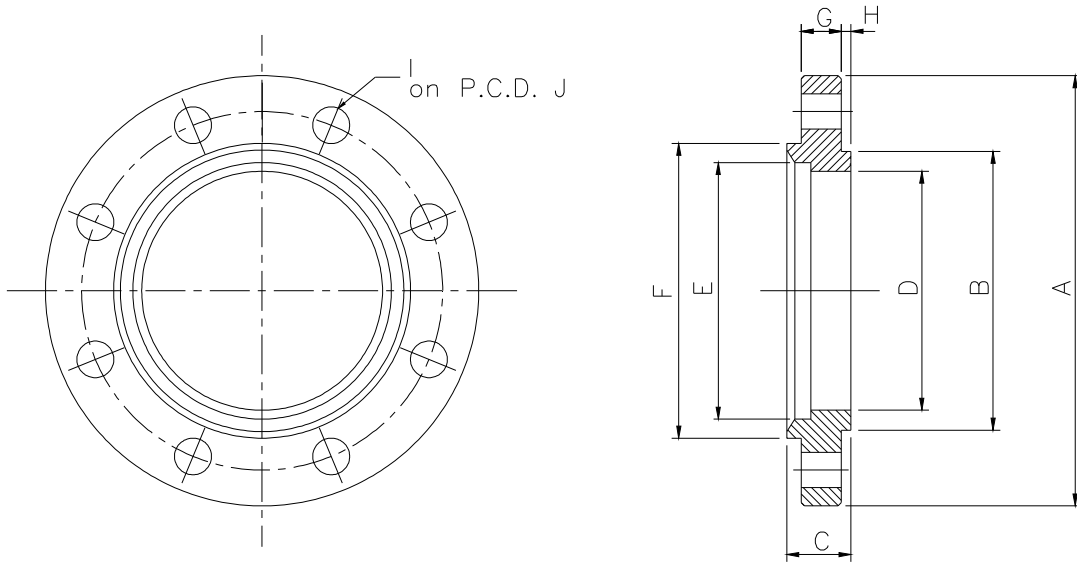


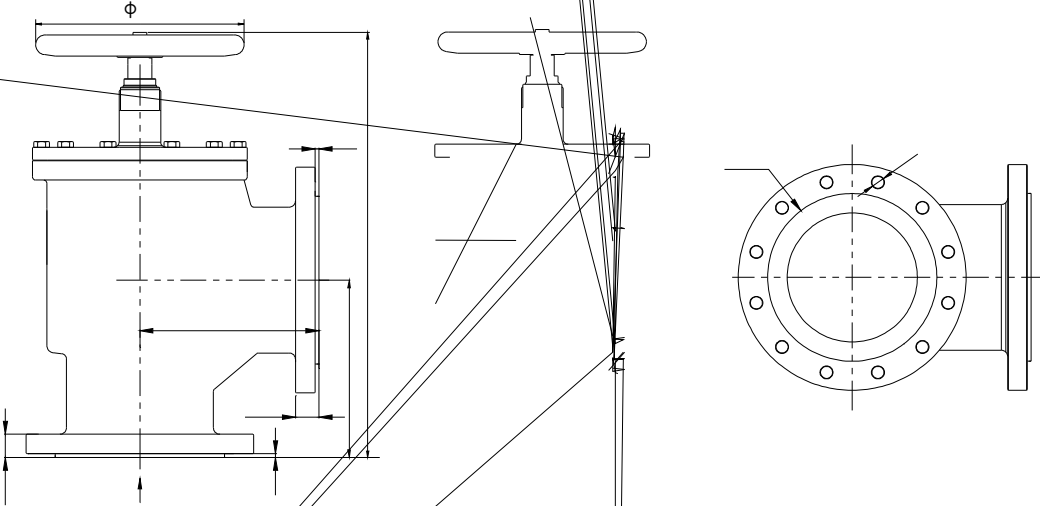
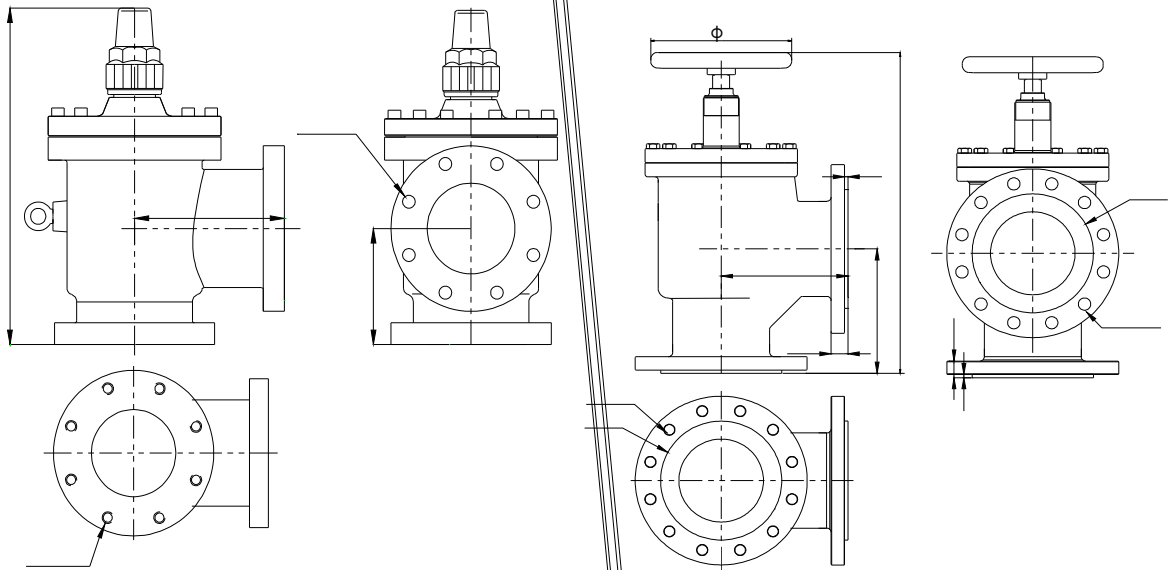


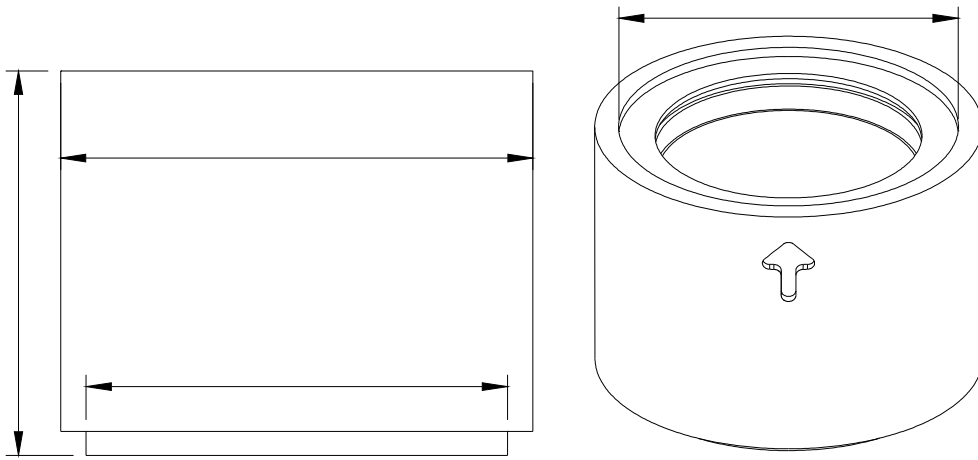

◆  
◆  
◆  
◆

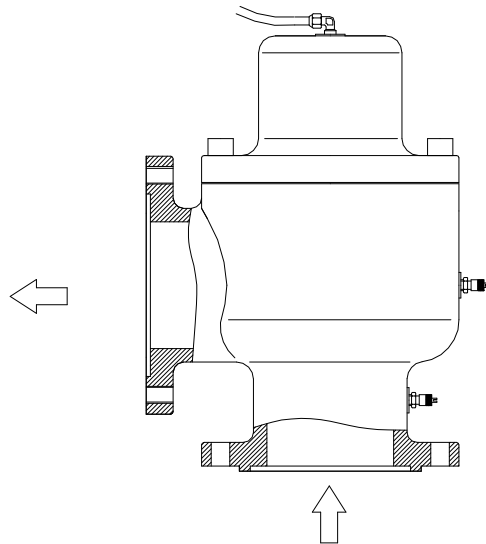
RC2HV			
1		1	
2		1	
3		1	
4		1	
5		1	
6		4	
7		1	
8		1	
9		1	
10		1	
11		1	
12		1	
13		1	
14		1	
15		1	
16		1	
17			
18	300W	1	
19		1	
20		1	
21		1	
22		1	

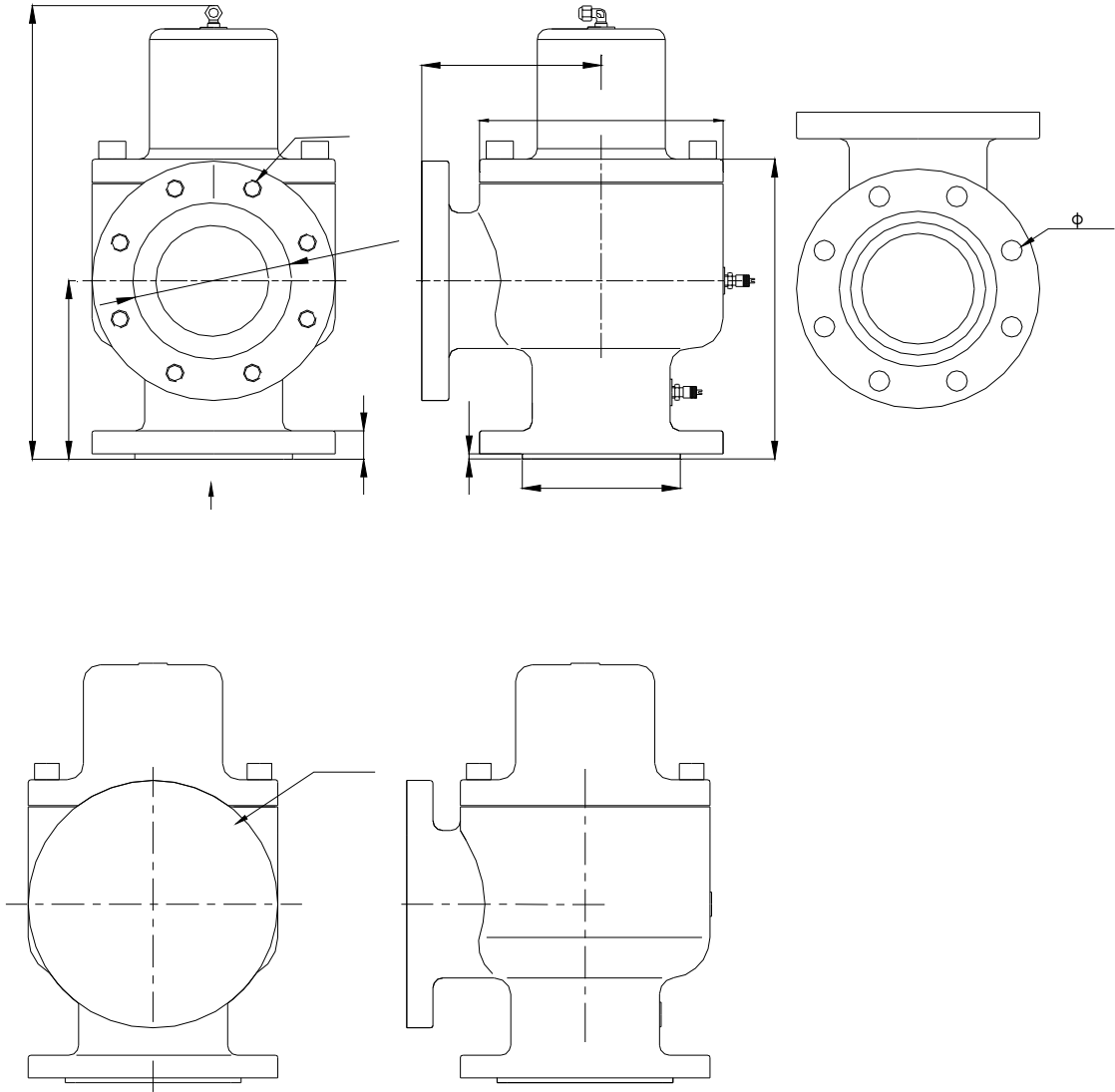




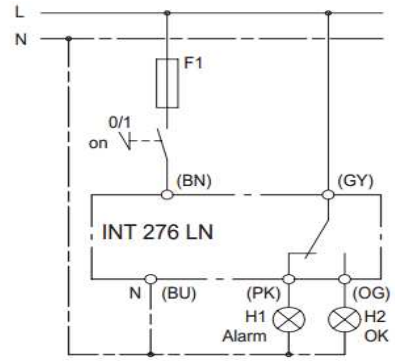



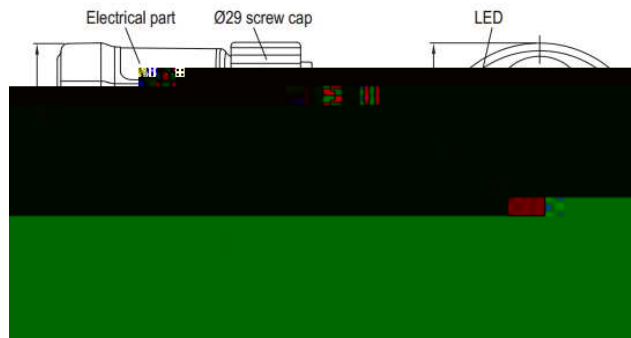


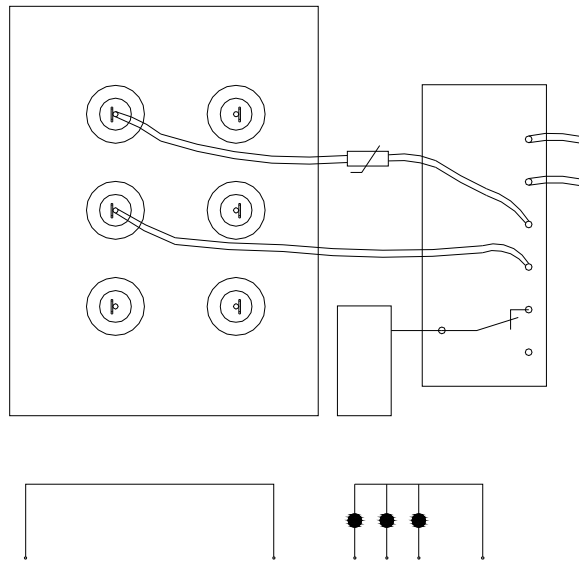







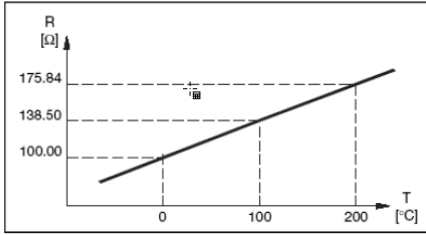





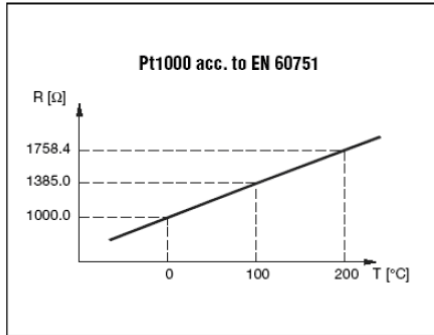
规格：

PT100 传感器

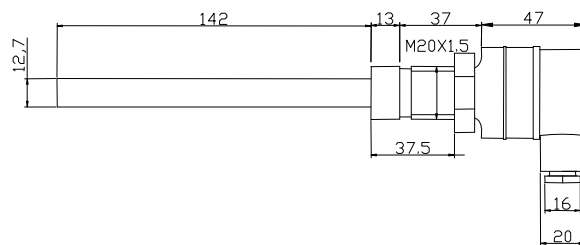


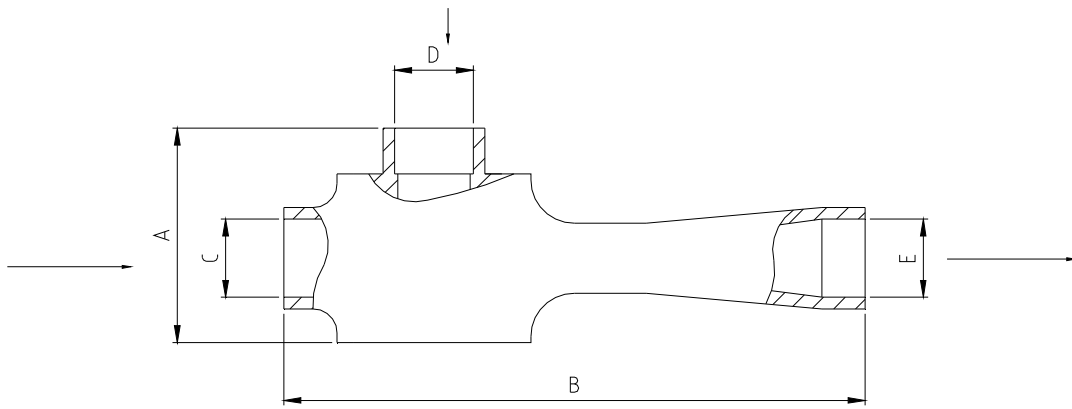
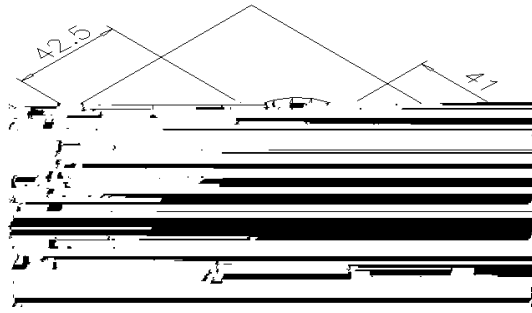
- 建议加热时最大理论电流：  
 $< 0.1\text{K} - \text{DC } 1 \sim 3 \text{ mA}$
- 加热系数 -  $10\text{m}\Omega/\text{K}$
- 传感器阻值，在  $0^\circ\text{C} - 100\Omega \pm 0.12\Omega$
- 电阻变化范围  $0 \sim 100^\circ\text{C} - 0.385\Omega/\text{K}$
- 绝缘测试电压  $U_{is} - \text{AC } 1.5\text{kV}$

PT1000 传感器

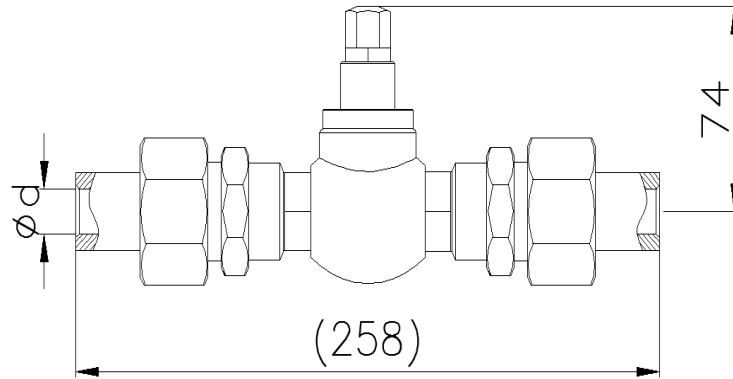


- 建议加热时最大理论电流：  
 $< 0.1\text{K} - \text{DC } 0.2 \sim 2 \text{ mA}$
- 传感器阻值，在  $0^\circ\text{C} - 1000\Omega \pm 1.20\Omega$
- 电阻变化范围  $0 \sim 100^\circ\text{C} - 3.85\Omega/\text{K}$
- 绝缘测试电压  $U_{is} - \text{AC } 1.5\text{kV}$



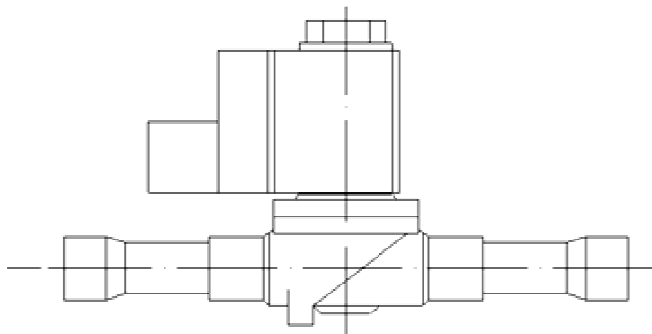




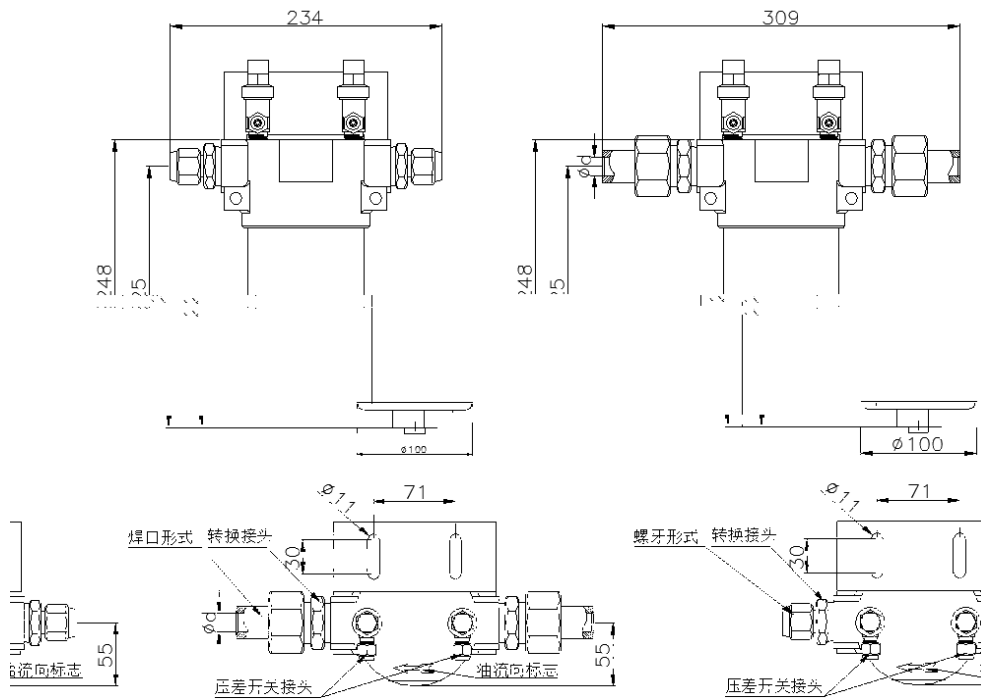


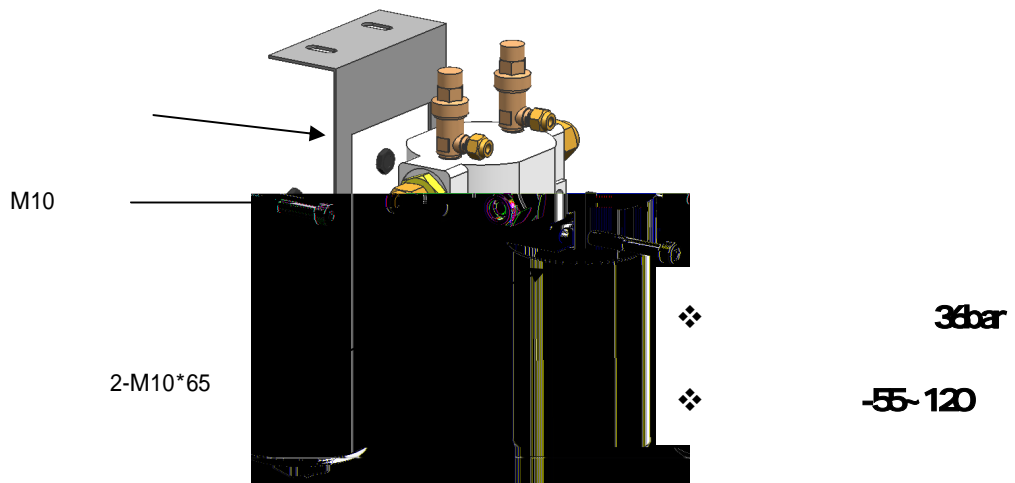
❖	
❖	
❖	
❖	
❖	

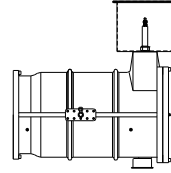
✧



❖ 105  
 ❖ 220V / 50HZ  
 " → "



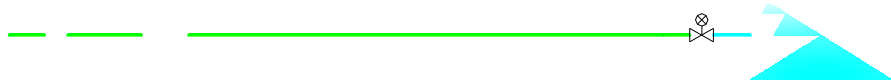





- 
- 
- 







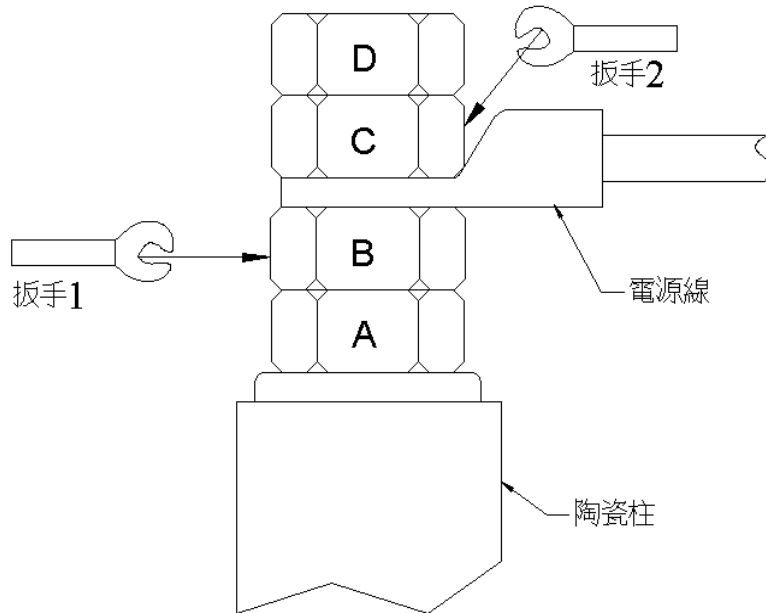
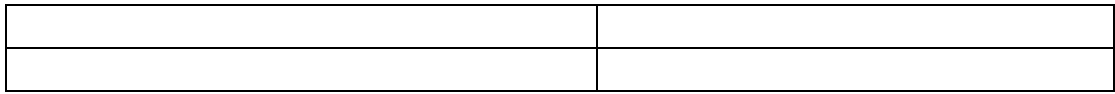


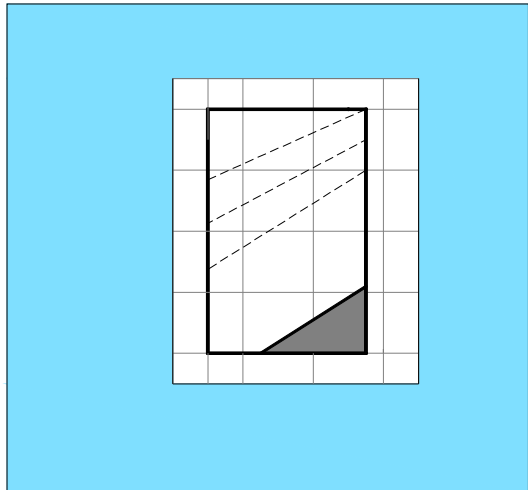
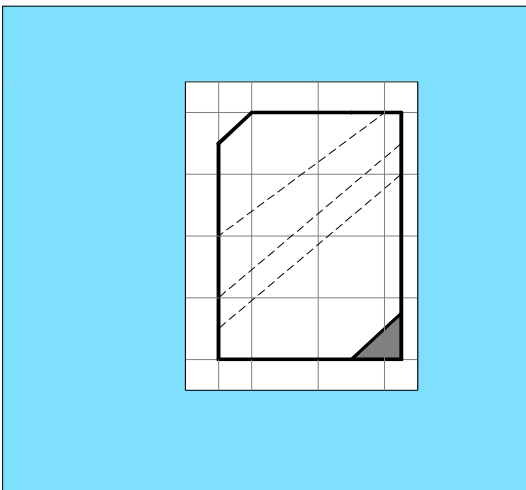
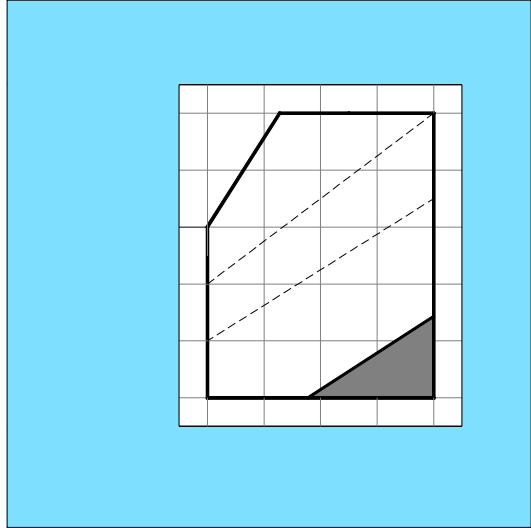
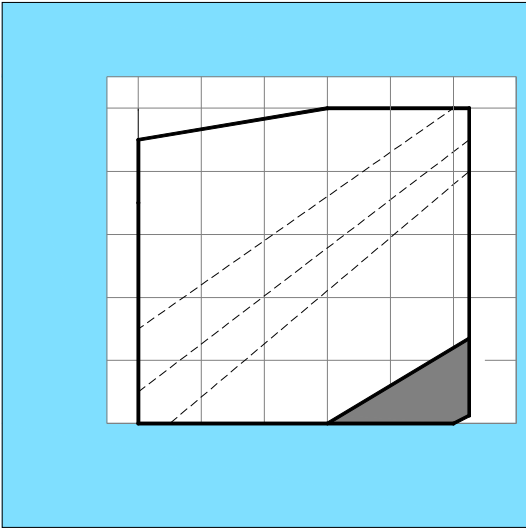




~















TEL 021-57350280 FAX 021-51368588

4007702158

P.C. 201501

http //www.hanbell.com.cn

TEL 0531-55616898 FAX 0531-55616800

TEL 025--52078091/2 FAX 025-52078090

TEL 020-34721075 FAX