

RG 开启式螺杆压缩机

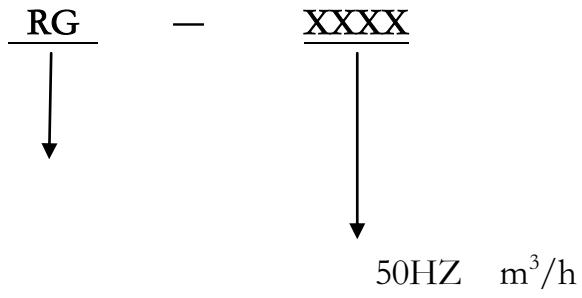


RG

RG

VI 2.6-5.6

RG

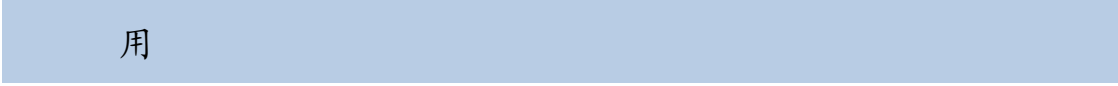




R22 R717 R134a R502

R507 R170 R290 R1150 R1270

RE170



用

用 5 6



SKF



25% 100%



2.6 5.6 RG1150 2850

RG

		RG-200	RG-410	RG-620	RG-830	RG1150	RG1270	RG1800	RG2280	RG2850	
50Hz	m ³ /h	190	402	619	816	1146	1264	1761	2270	2851	
	Rpm	4500					3600				
	Rpm	1500									
		25% 100%									
VI		2.6 5.1				2.6~5.6					
	kg	232	320	475	513	1000	1166	1600	1720	1900	

ECO

		RG200,R22						
		-50	-40	-30	-20	-10	0	10
30	(kW)	19.9	35.1	56.2	86.2	128.1	184.7	259.2
	(kW)	21.1	24.1	27.3	30.5	33.5	36.3	38.5
	(A)	36.1	41.1	46.6	52.0	57.2	61.9	65.8
	COP	0.944	1.458	2.062	2.829	3.819	5.092	6.727
35	(kW)	18.2	33.0	53.2	81.9	122.0	176.6	248.5
	(kW)	22.5	26.0	29.7	33.1	36.3	39.0	41.1
	(A)	38.3	44.5	50.6	56.6	62.0	66.6	70.1
	COP	0.811	1.266	1.793	2.471	3.361	4.527	6.053
40	(kW)	16.3	30.6	49.9	77.3	115.7	168.1	237.6
	(kW)	23.9	28.2	32.3	36.1	39.5	42.2	44.1
	(A)	40.8	48.1	55.1	61.7	67.4	72.0	75.3
	COP	0.682	1.085	1.545	2.140	2.931	3.985	5.385
45	(kW)	--	28.0	46.4	72.4	109.1	159.4	226.2
	(kW)	--	30.5	35.2	39.5	43.1	45.9	47.7
	(A)	--	52.1	60.1	67.4	73.5	78.4	81.5
	COP	--	0.916	1.316	1.835	2.533	3.473	4.738
50	(kW)	--	--	42.6	67.3	102.2	150.3	214.6
	(kW)	--	--	38.5	43.2	47.2	50.2	52.0
	(A)	--	--	65.7	73.8	80.5	85.6	88.8
	COP	--	--	1.107	1.557	2.167	2.997	4.126

		RG200,R717						
		-50	-40	-30	-20	-10	0	10
30	(kW)	15.9	29.7	50.7	82.2	127.2	188.6	269.5
	(kW)	21.5	23.8	26.9	30.3	33.4	35.6	36.4
	(A)	36.7	40.6	45.9	51.7	57.0	60.8	62.1
	COP	0.743	1.248	1.886	2.713	3.807	5.295	7.411
35	(kW)	14.7	28.2	48.6	79.2	122.8	182.6	261.5
	(kW)	23.7	26.0	29.3	33.1	36.7	39.6	41.2
	(A)	40.4	44.3	50.0	56.5	62.6	67.6	70.3
	COP	0.623	1.084	1.659	2.393	3.347	4.612	6.351
40	(kW)	13.3	26.5	46.3	75.9	118.3	176.4	253.5
	(kW)	26.1	28.4	31.9	36.0	40.1	43.7	46.1
	(A)	44.5	48.5	54.5	61.5	68.5	74.6	78.7
	COP	0.510	0.931	1.451	2.108	2.947	4.039	5.498
45	(kW)	--	24.5	43.8	72.4	113.5	170.1	245.2
	(kW)	--	31.1	34.7	39.1	43.7	47.9	51.2
	(A)	--	53.1	59.3	66.8	74.7	81.8	87.3
	COP	--	0.789	1.260	1.850	2.596	3.549	4.793
50	(kW)	--	--	41.0	68.7	108.5	163.5	236.7
	(kW)	--	--	37.8	42.5	47.5	52.3	56.3
	(A)	--	--	64.6	72.6	81.2	89.4	96.2
	COP	--	--	1.083	1.616	2.283	3.124	4.201

RG410,R22								
		-50	-40	-30	-20	-10	0	10
30	(kW)	42.4	74.7	119.5	183.2	272.1	392.5	550.7
	(kW)	43.9	50.1	56.7	63.4	69.7	75.4	80.1
	(A)	75.0	85.6	96.8	108.2	119.1	128.8	136.8
	COP	0.965	1.490	2.107	2.891	3.902	5.203	6.873
35	(kW)	38.7	70.0	113.0	174.0	259.3	375.2	528.1
	(kW)	46.7	54.2	61.7	68.9	75.5	81.1	85.4
	(A)	79.7	92.4	105.3	117.6	128.9	138.5	145.8
	COP	0.829	1.293	1.832	2.525	3.434	4.625	6.185
	(kW)	34.7	64.9					

40

		RG410,R717						
		-50	-40	-30	-20	-10	0	10
30	(kW)	34.0	63.2	108.1	175.2	271.0	401.8	574.2
	(kW)	44.8	49.6	56.2	63.3	69.7	74.3	75.9
	(A)	76.5	84.7	95.9	108.0	119.0	126.9	129.6
	COP	0.758	1.274	1.925	2.770	3.886	5.405	7.566
35	(kW)	31.4	60.0	103.6	168.7	261.7	389.1	557.3
	(kW)	49.4	54.2	61.2	69.0	76.6	82.6	86.0
	(A)	84.3	92.6	104.4	117.9	130.7	141.1	146.8
	COP	0.636	1.107	1.694	2.443	3.417	4.709	6.483
40	(kW)	28.4	56.4	98.7	161.8	252.0	376.0	540.1
	(kW)	54.4	59.3	66.6	75.2	83.8	91.2	96.2
	(A)	92.9	101.2	113.7	128.3	143.0	155.7	164.3
	COP	0.521	0.951	1.482	2.152	3.009	4.123	5.612
45	(kW)	--	52.3	93.3	154.4	241.9	362.5	522.5
	(kW)	--	64.9	72.5	81.7	91.3	100.0	106.8
	(A)	--	110.8	123.8	139.5	155.9	170.8	182.3
	COP	--	0.805	1.286	1.889	2.650	3.623	4.894
50	(kW)	--	--	87.3	146.4	231.3	348.5	504.4
	(kW)	--	--	78.9	88.7	99.2	109.3	117.6
	(A)	--	--	134.8	151.5	169.4	186.5	200.8
	COP	--	--	1.106	1.650	2.331	3.189	4.288

RG620,R22								
		-50	-40	-30	-20	-10	0	10
30	(kW)	64.8	114.2	182.8	280.3	416.3	600.5	842.5
	(kW)	65.9	75.2	85.1	95.1	104.6	113.1	120.2
	(A)	112.5	128.4	145.3	162.3	178.6	193.2	205.2
	COP	0.984	1.519	2.149	2.948	3.980	5.307	7.010
35	(kW)	59.2	107.1	172.9	266.2	396.7	574.1	807.9
	(kW)	70.1	81.2	92.5	103.4	113.3	121.7	128.1
	(A)	119.6	138.7	157.9	176.5	193.4	207.7	218.7
	COP	0.845	1.319	1.869	2.575			

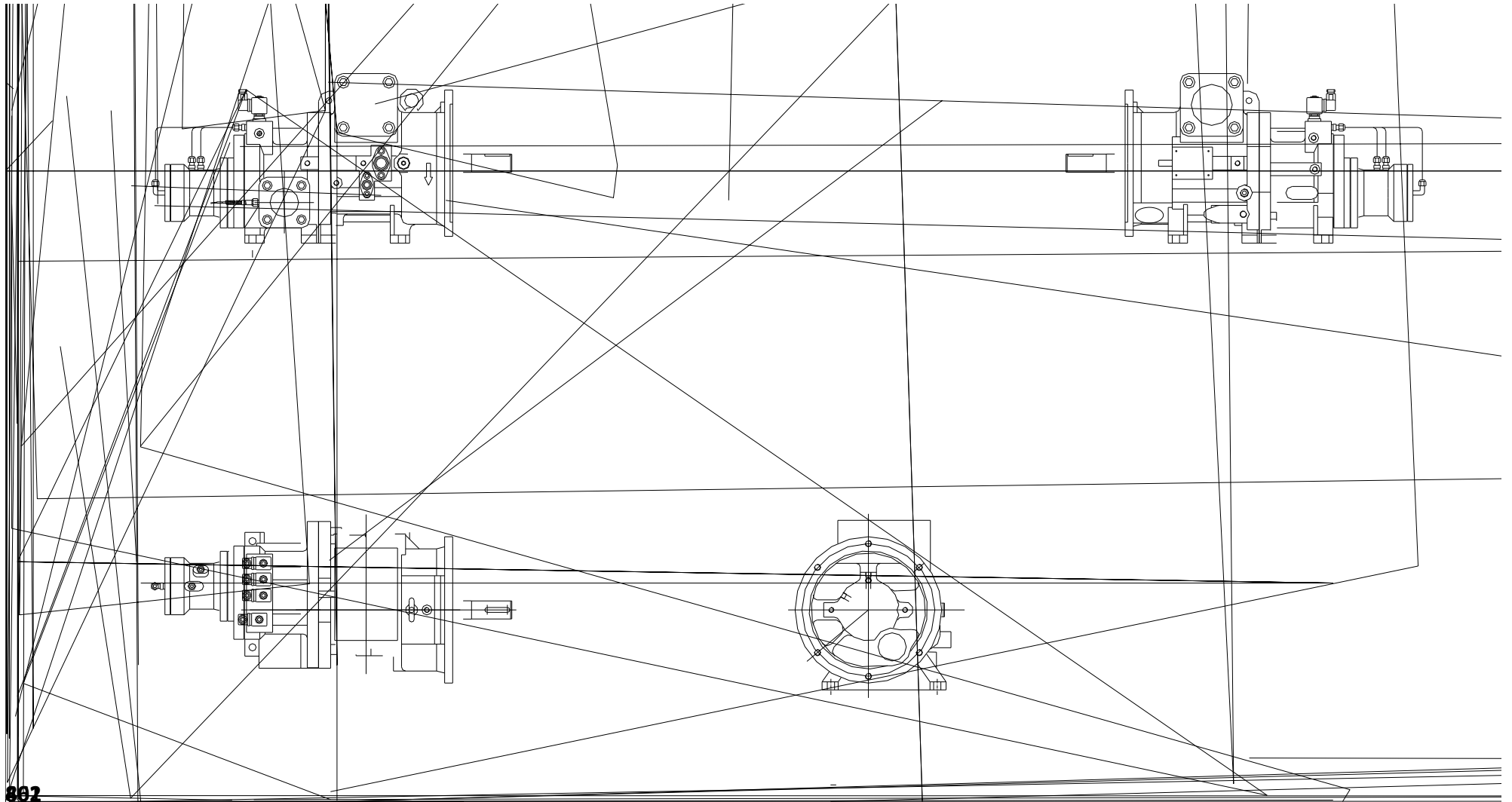
RG620,R717								
		-50	-40	-30	-20	-10	0	10
30	(kW)	52.3	97.3	166.4	269.7	417.0	618.4	883.7
	(kW)	66.8	73.9	83.7	94.3	103.9	110.8	113.1
	(A)	114.0	126.2	142.9	160.9	177.4	189.1	193.1
	COP	0.783	1.316	1.989	2.861	4.014	5.583	7.814
35	(kW)	48.3	92.4	159.5	259.6	402.7	598.7	857.7
	(kW)	73.6	80.8	91.2	102.9	114.1	123.1	128.1

RG830,R22								
		-50	-40	-30	-20	-10	0	10
30	(kW)	88.1	155.2	248.4	380.8	565.5	815.7	1144.6
	(kW)	86.4	98.6	111.6	124.7	137.2	148.4	157.6
	(A)	147.5	168.3	190.5	212.9	234.2	253.3	269.1
	COP	1.019	1.574	2.226	3.054	4.122	5.497	7.262
35	(kW)	80.5	145.5	234.9	361.6	538.9	779.9	1097.6
	(kW)	91.9	106.5	121.3	135.6	148.5	159.6	168.0
	(A)	156.9	181.9	207.1	231.4	253.6	272.4	286.8
	COP	0.876	1.366	1.936	2.668	3.628	4.887	6.534
40	(kW)	72.1	134.9	220.3	341.3	511.0	742.6	1049.1
	(kW)	97.8	115.2	132.1	147.7	161.5	172.6	180.5
	(A)	167.0	196.7	225.5	252.2	275.7	294.7	308.1
	COP	0.737	1.171	1.668	2.31	3.164	4.301	5.813
45	(kW)	--	123.5	204.7	319.8	481.8	703.8	999.1
	(kW)	--	124.8	144.1	161.4	176.2	187.8	195.3
	(A)	--	213.1	246.0	275.6	300.9	320.5	333.5
	COP	--	0.989	1.421	1.981	2.734	3.749	5.115
50	(kW)	--	--	188.2	297.2	451.3	663.8	947.6
	(kW)	--	--	157.5	176.9	193.0	205.2	212.8
	(A)	--	--	268.9	301.9	329.5	350.3	363.2
	COP	--	--	1.195	1.680	2.339	3.235	4.454

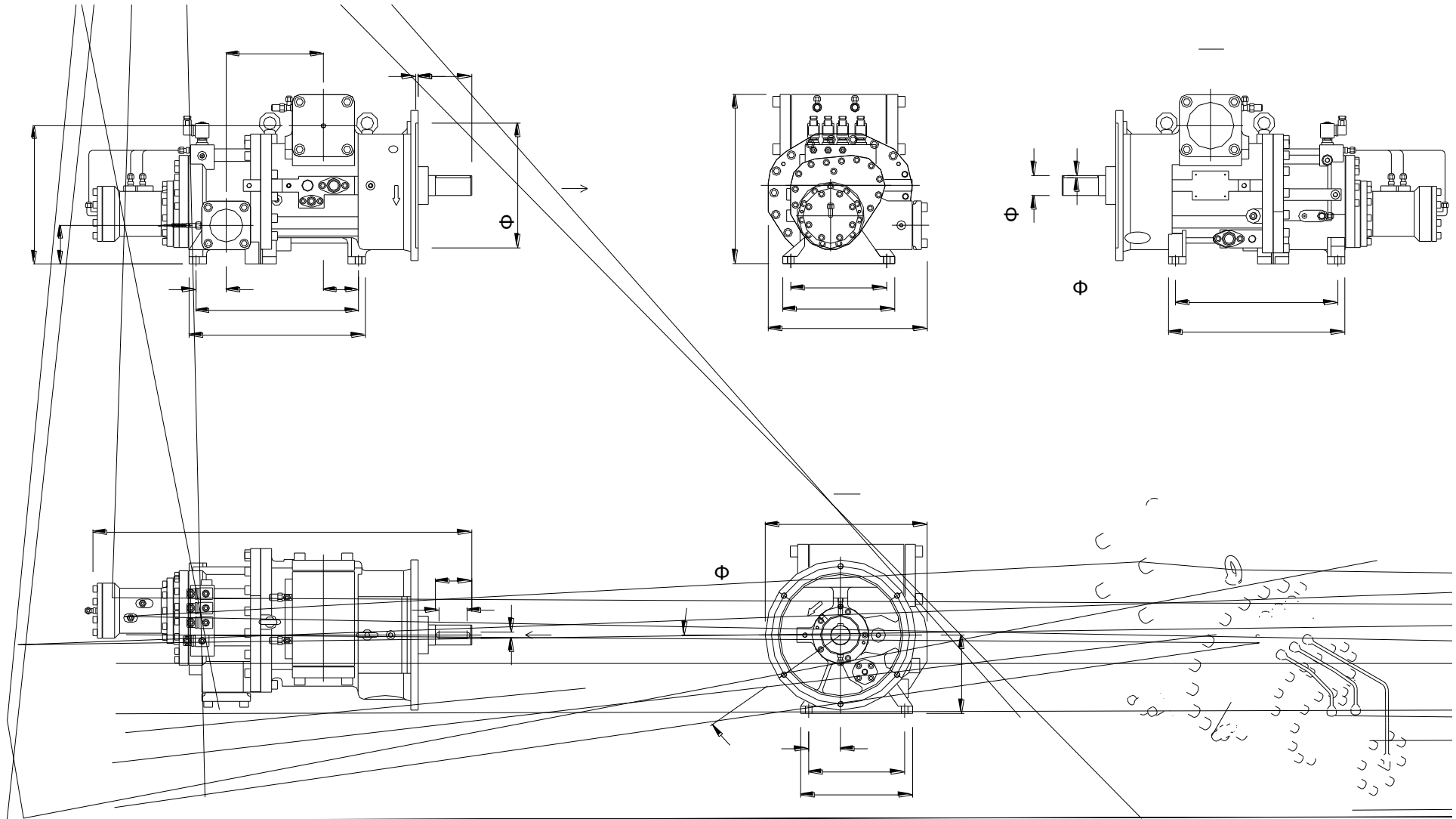
RG830,R717								
		-50	-40	-30	-20	-10	0	10
30	(kW)	71.1	132.3	226.3	366.6	566.9	840.7	1201.4
	(kW)	87.5	96.8	109.6	123.4	136.0	145.0	148.1
	(A)	149.3	165.2	187.0	210.7	232.2	247.6	252.8
	COP	0.813	1.366	2.065	2.970	4.168	5.797	8.114
35	(kW)	65.7	125.6	216.8	352.9	547.5	814.0	1166.1
	(kW)	96.3	105.8	119.4	134.7	149.4	161.2	167.7
	(A)	164.4	180.6	203.8	229.9	255.1	275.2	286.3
	COP	0.682	1.187	1.816	2.621	3.664	5.050	6.953
40	(kW)	59.3	118.0	206.5	338.4	527.3	786.7	1130.1
	(kW)	106.2	115.7	130.0	146.6	163.4	177.9	187.8
	(A)	181.3	197.5	221.9	250.3	278.9	303.7	320.5
	COP	0.559	1.020	1.589	2.308	3.227	4.422	6.019
45	(kW)	--	109.4	195.2	323.0	506.2	758.4	1093.2
	(kW)	--	126.6	141.5	159.4	178.1	195.2	208.3
	(A)	--	216.2	241.5	272.2	304.1	333.2	355.6
	COP	--	0.864	1.380	2.026	2.842	3.886	5.248
50	(kW)	--	--	182.7	306.3	483.9	729.1	1055.3
	(kW)	--	--	154.0	173.1	193.6	213.2	229.4
	(A)	--	--	262.9	295.5	330.5	363.9	391.7
	COP	--	--	1.186	1.770	2.500	3.420	4.599

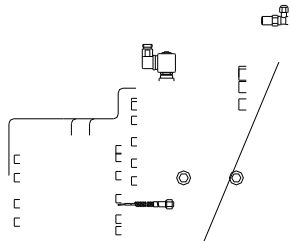
RG1270,R22								
		-50	-40	-30	-20	-10	0	10
30	(kW)	133.0	234.3	375.1	575.0	854.0	1231.8	1728.3
	(kW)	145.4	166.0	187.8	209.9	230.9	249.8	265.3
	(A)	248.3	283.3	320.6	358.3	394.2	426.4	452.9
	COP	0.914	1.412	1.997	2.740	3.699	4.932	6.515
35	(kW)	121.5	219.8	354.7	546.1	813.8	1177.6	1657.4
	(kW)	154.6	179.3	204.2	228.2	250.0	268.8	282.7
	(A)	264.0	306.1	348.6	389.5	426.8	458.6	482.7
	COP	0.786	1.226	1.737	2.393	3.255	4.384	5.862
40	(kW)	108.8	203.8	332.7	515.3	771.6	1121.3	1584.2
	(kW)	164.6	193.9	222.3	248.7	271.8	290.6	303.8
	(A)	281.1	331.0	379.5	424.5	464.0	496.1	518.6
	COP	0.661	1.051	1.497	2.072	2.839	3.859	5.215
45	(kW)	--	186.4	309.1	482.9	727.5	1062.8	1508.6
	(kW)	--	210.1	242.5	271.7	296.6	316.0	328.8
	(A)	--	358.7	414.0	463.9	506.4	539.5	561.3
	COP	--	0.887	1.275	1.777	2.453	3.93	4.589
50	(kW)	--	--	284.1	448.8	681.5	1002.3	1430.8
	(kW)	--	--	265.1	297.7	324.8	345.3	358.1
	(A)	--	--	452.6	508.2	554.5	589.5	611.3
	COP	--	--	1.072	1.507	2.098	2.902	3.966

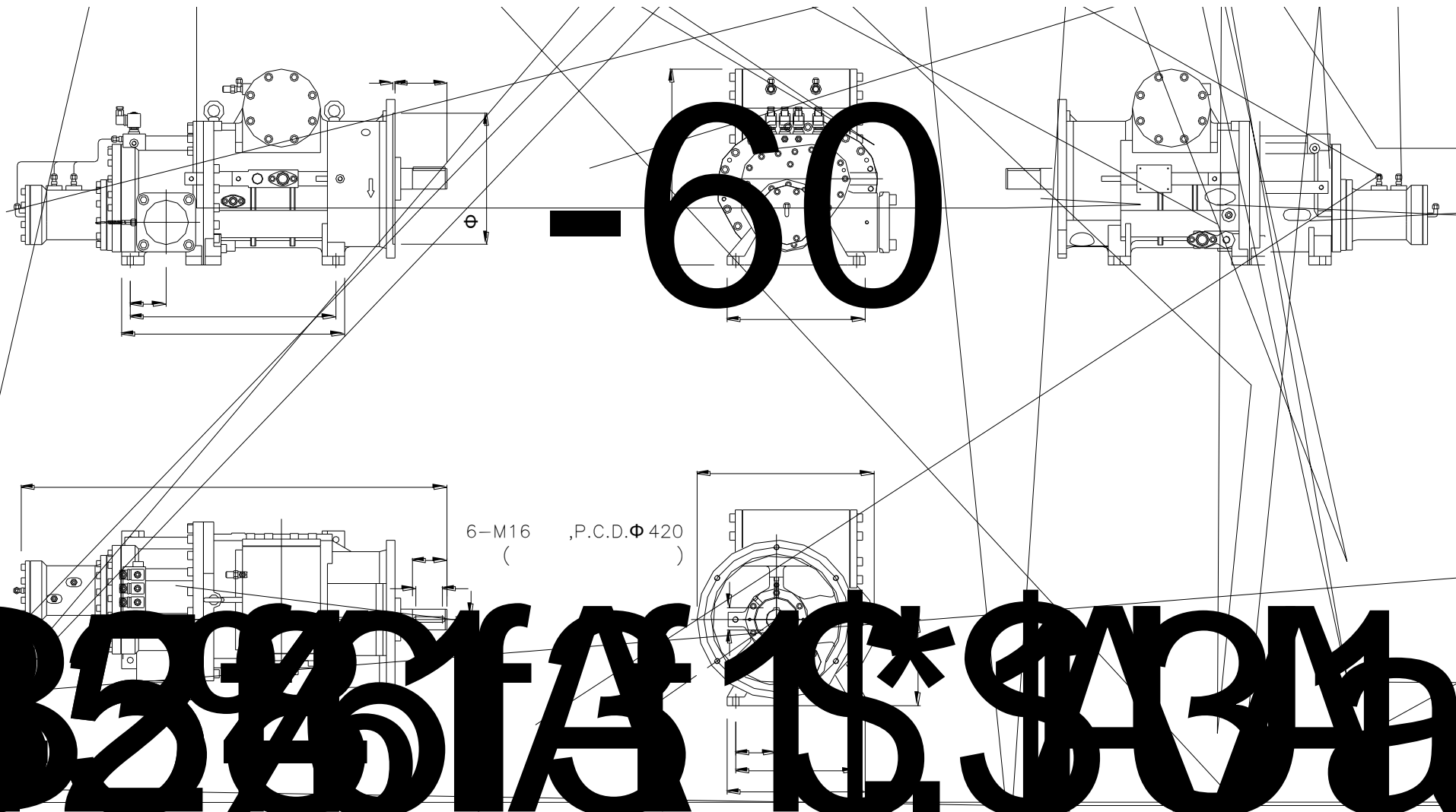
		RG1270,R717						
		-50	-40	-30	-20	-10	0	10
30	(kW)	116.9	217.4	371.8	602.5	931.7	1381.6	1974.5
	(kW)	134.1	148.4	168.0	189.2	208.5	222.3	227.0
	(A)	228.9	253.3	286.8	323.0	356.0	379.6	387.5
	COP	0.872	1.465	2.214	3.184	4.468	6.214	8.698
35	(kW)	107.9	206.3	356.3	580.0	899.8	1337.8	1916.4
	(kW)	147.7	162.2	183.0	206.5	229.1	247.1	257.1
	(A)	252.1	276.9	312.4	352.5	391.0	421.9	438.9
	COP	0.731	1.272	1.947	2.809	3.928	5.413	7.454
40	(kW)	97.5	193.9	339.4	556.2	866.6	1292.9	1857.3
	(kW)	162.8	177.4	199.2	224.8	250.5	272.7	287.8
	(A)	278.0	302.8	340.2	383.8	427.7	465.6	491.4
	COP	0.559	1.093	1.703	2.474	3.459	4.741	6.452
45	(kW)	--	179.7	320.8	530.8	831.9	1246.4	1796.7
	(kW)	--	194.1	216.9	244.4	273.1	299.2	319.4
	(A)	--	331.4	370.3	417.3	466.2	510.8	545.2
	COP	--	0.926	1.479	2.172	3.047	4.165	5.626
50	(kW)	--	--	300.2	503.4	795.3	1198.2	1734.4
	(kW)	--	--	236.1	265.4	296.8	326.8	351.8
	(A)	--	--	403.1	453.1	506.7	557.9	600.5
	COP	--	--	1.272	1.897	2.680	3.666	4.930



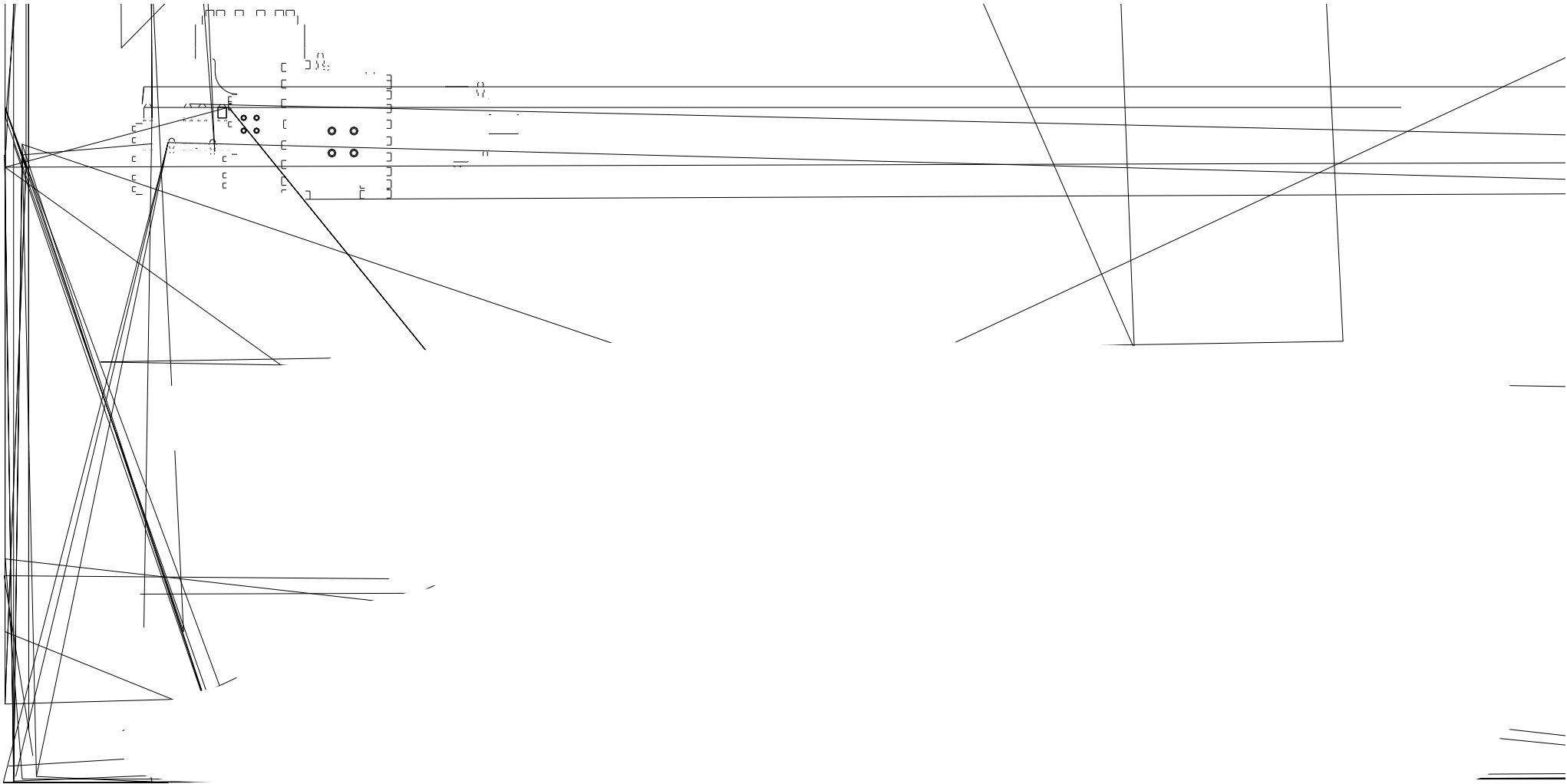
RG410

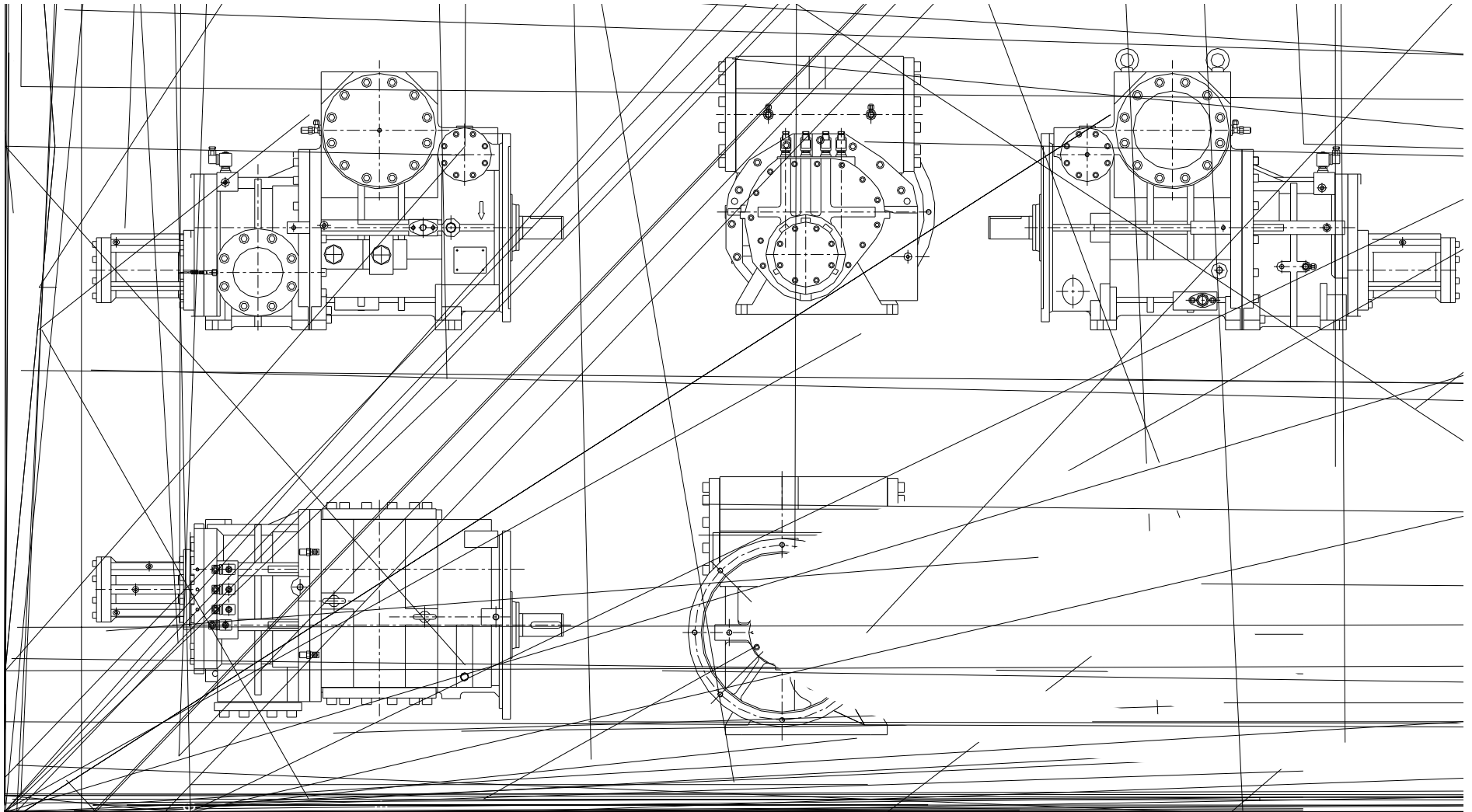


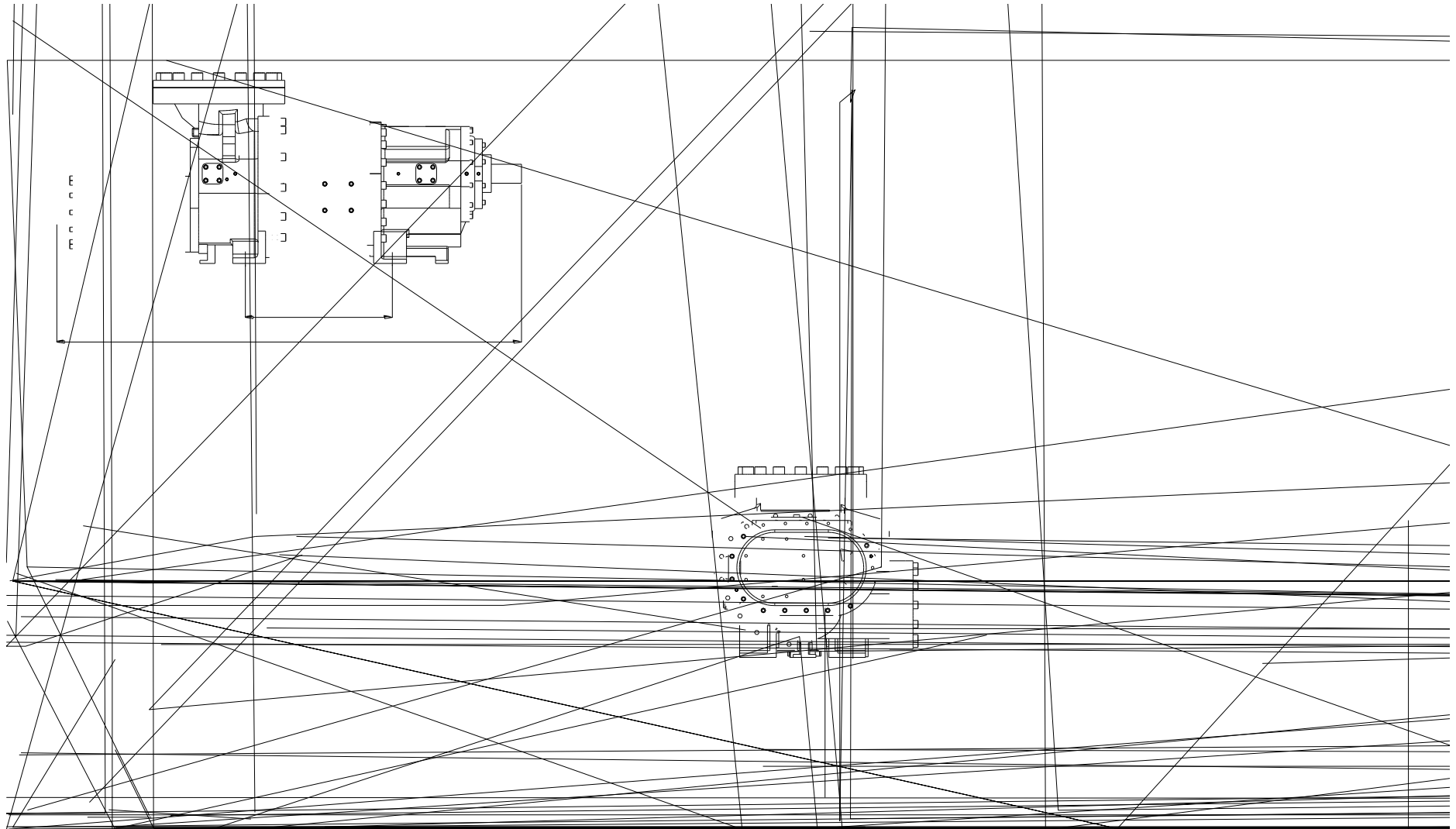




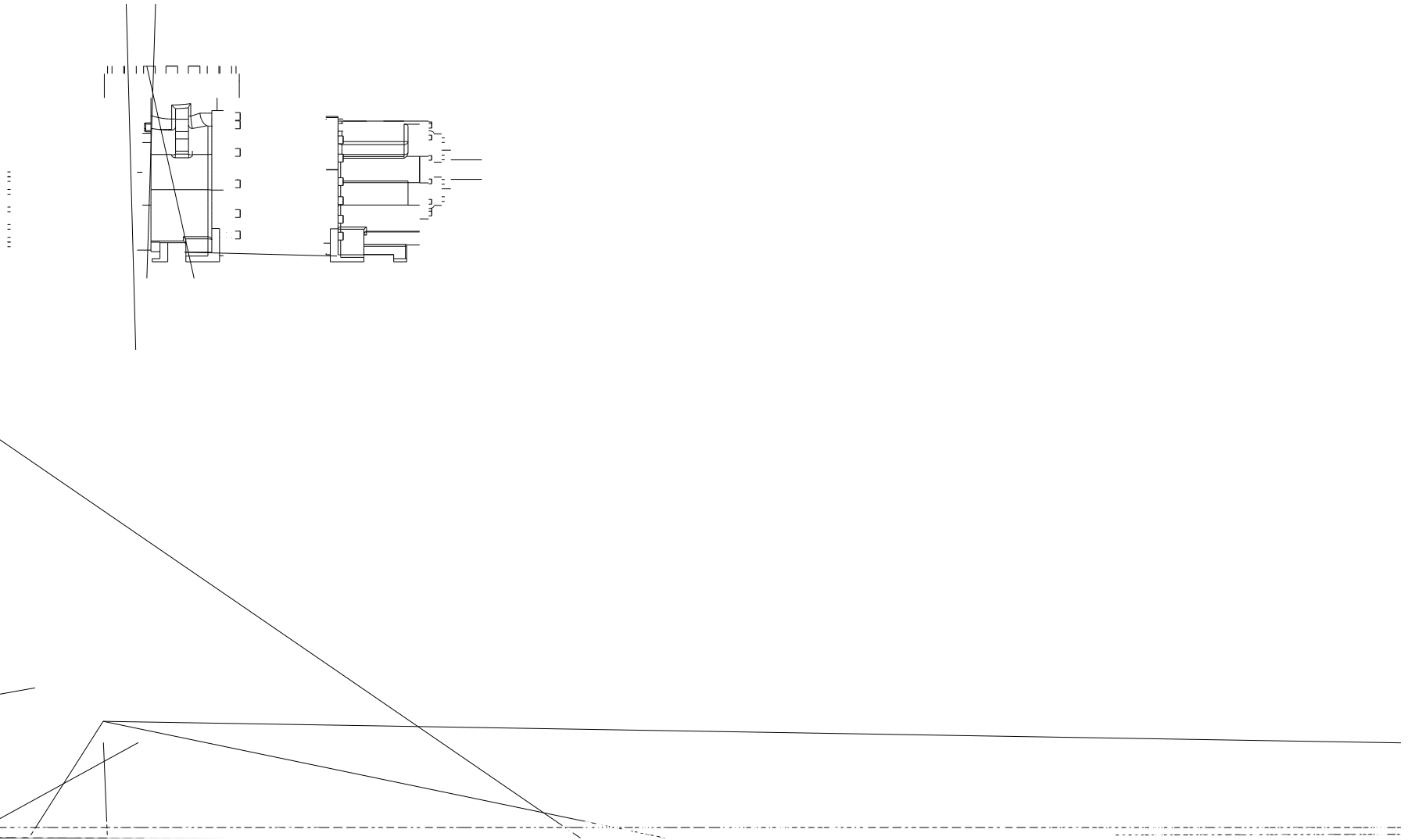
RG1150



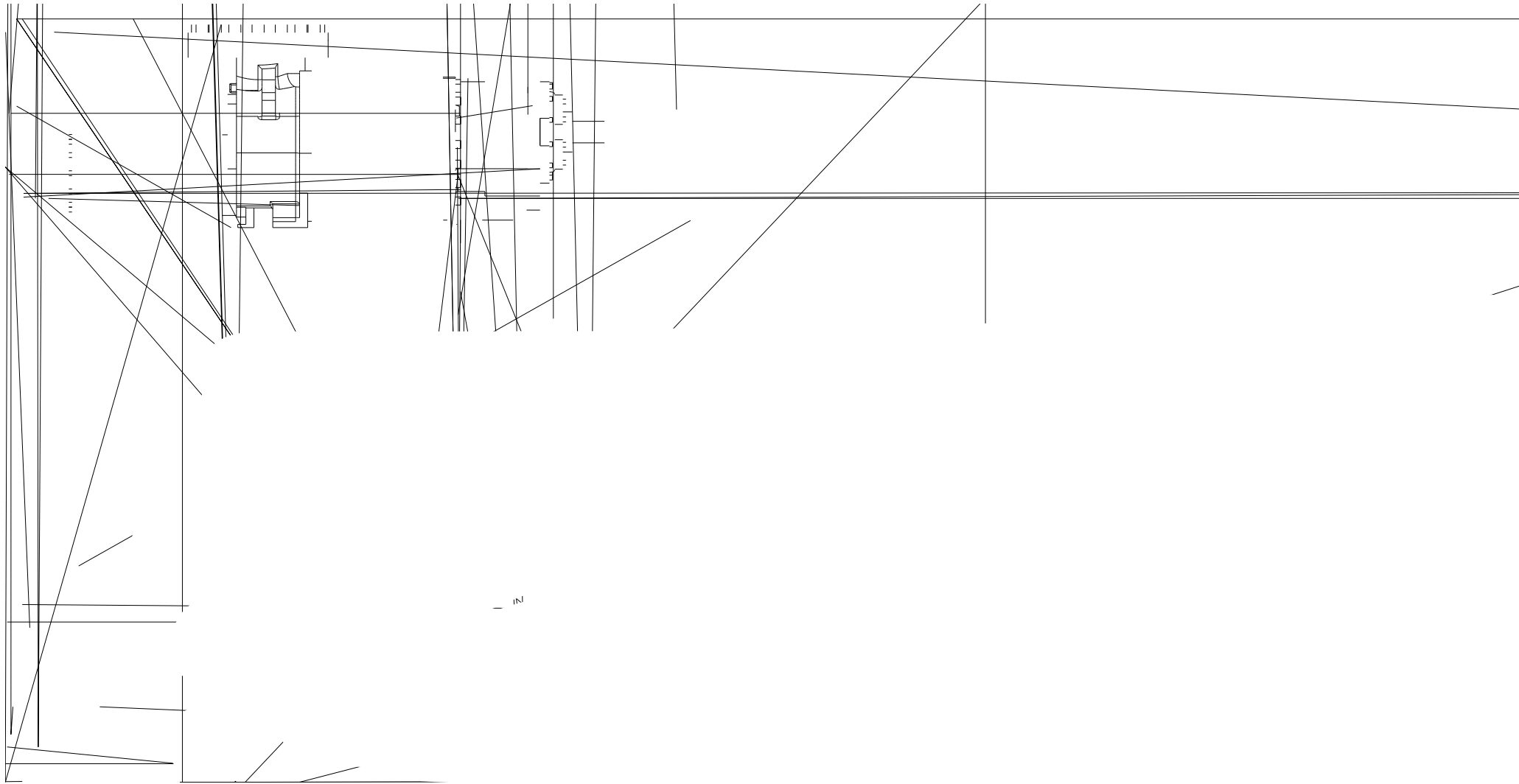


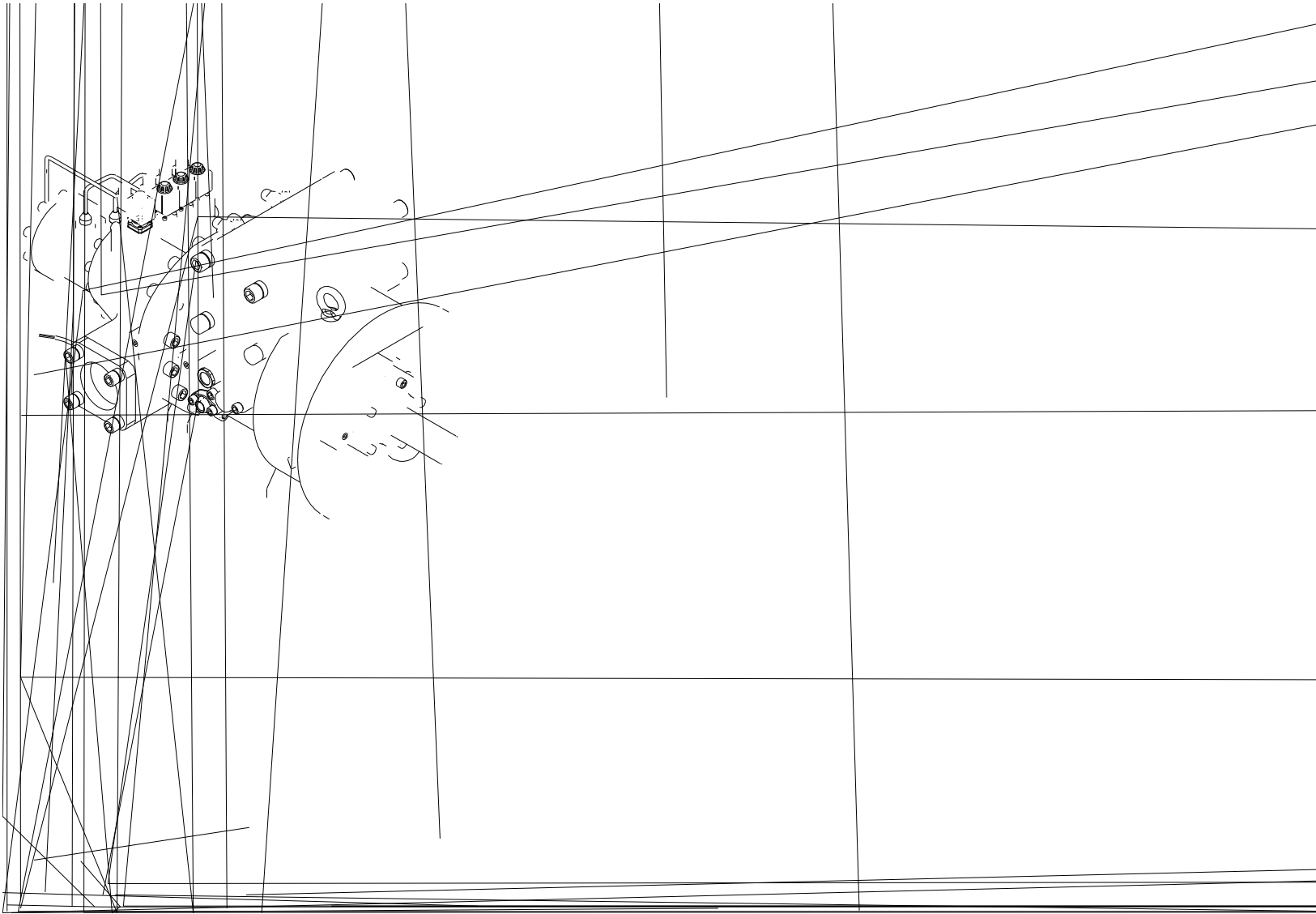


RG2280

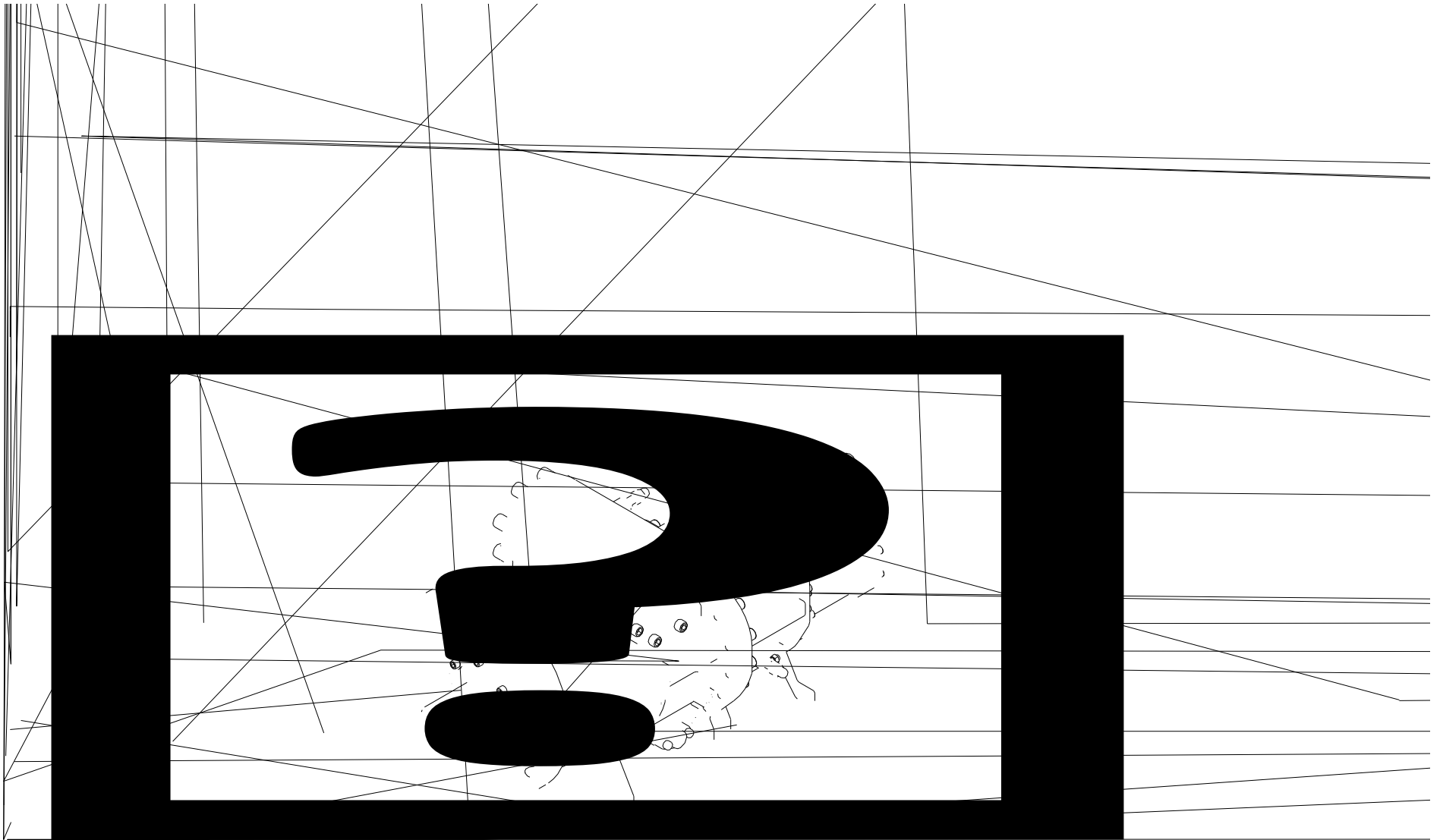


RG2850

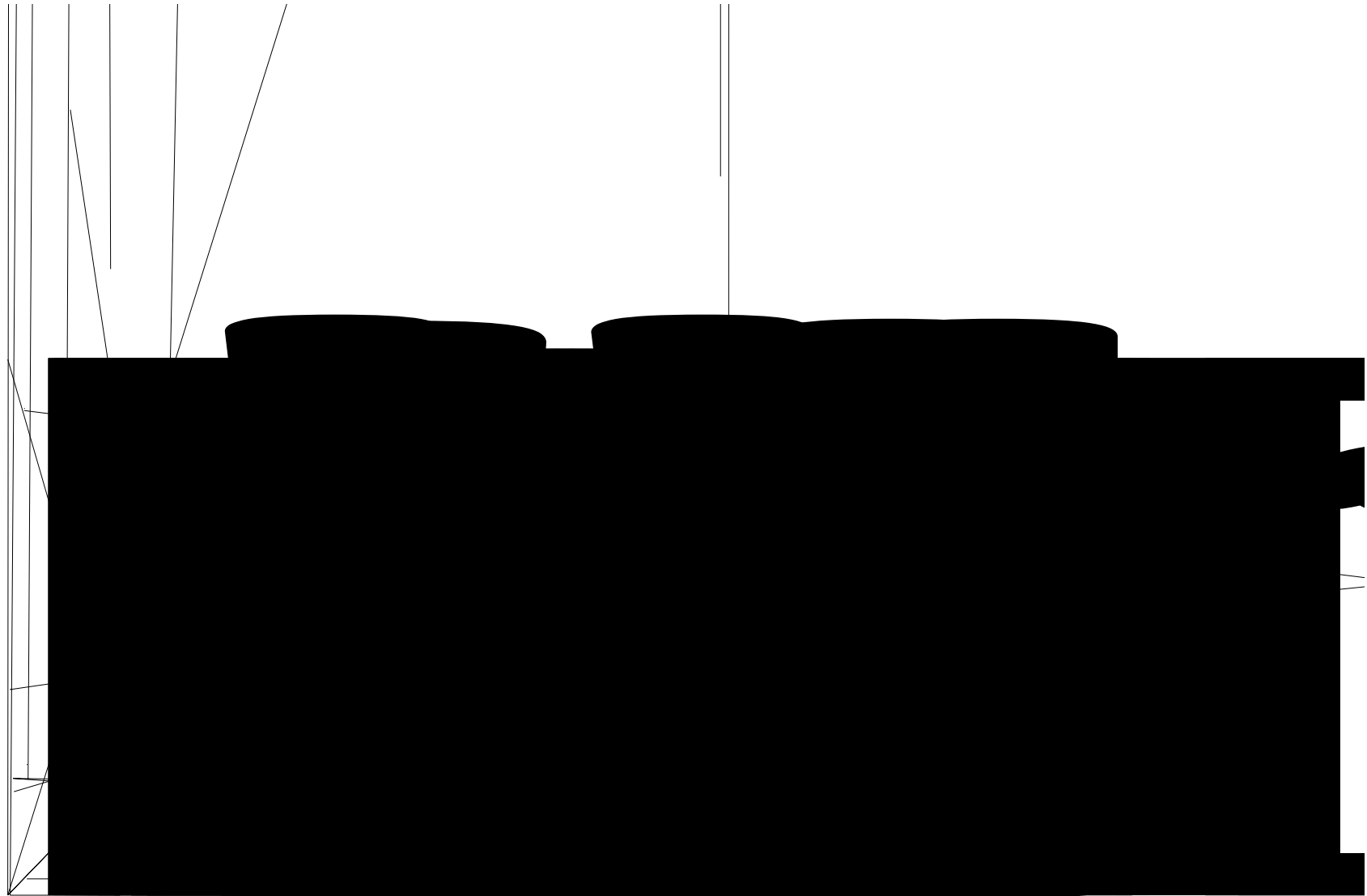


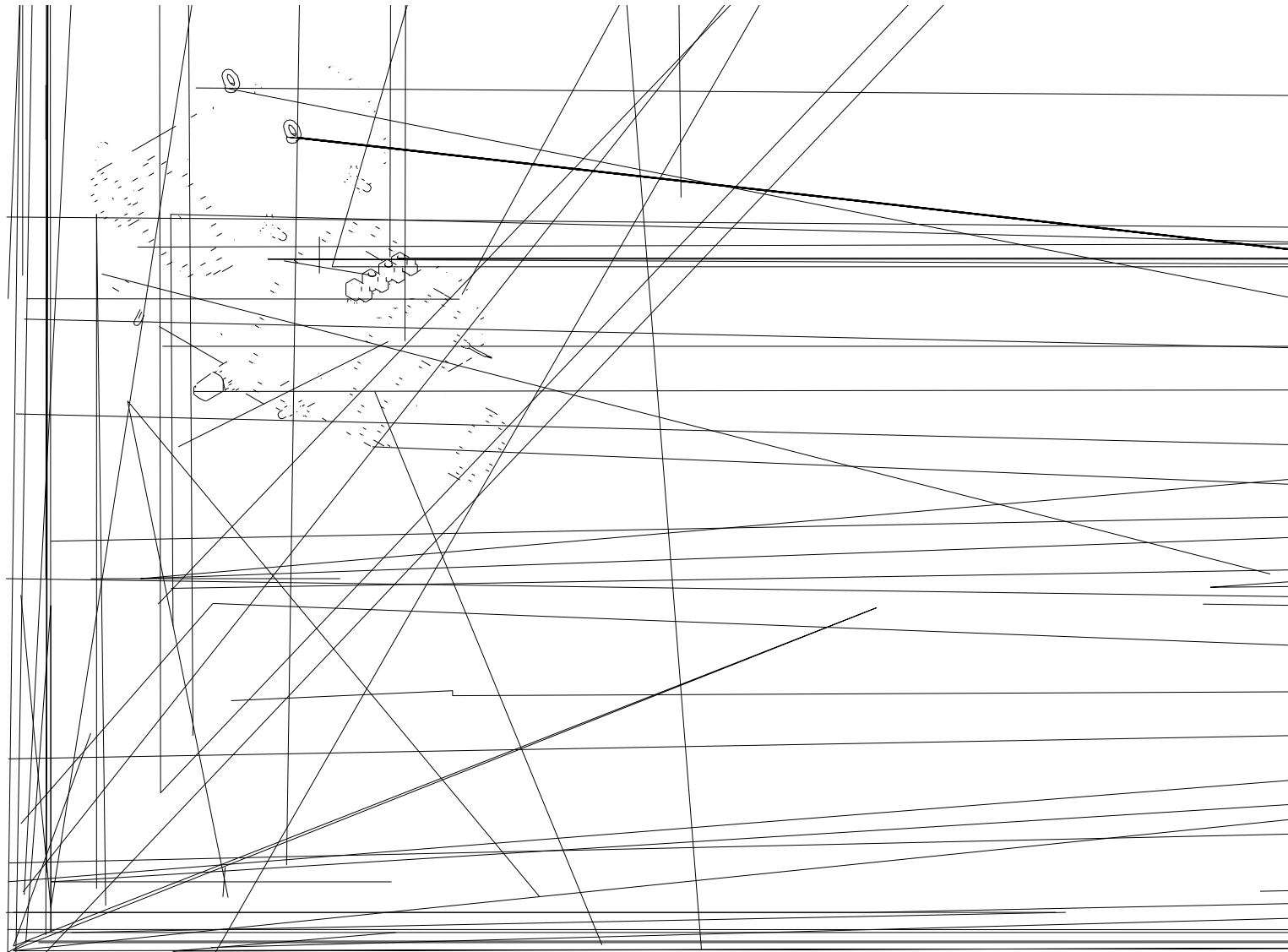


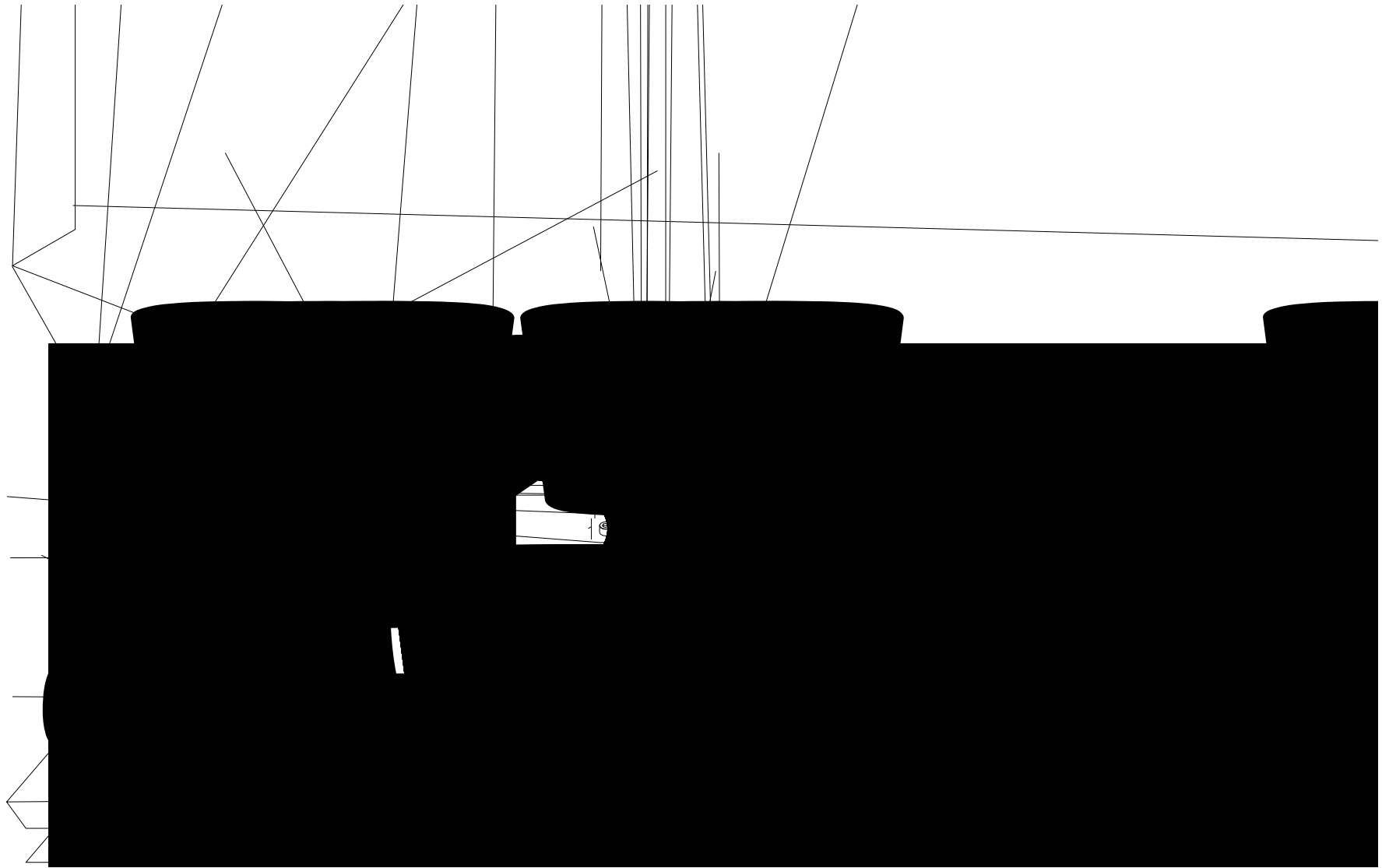
RG620



RG830







RG

RG-200	2"	55	61.3	3"	80.5	90.2
RG-410	2 1/2"	68	77.2	4"	93	110
RG-620	3"	80.5	90.2	5"	106	135
RG-830	4"	93	110	5"	106	135
RG-1270	6"	159		8"	218	
RG1800	HANBELL					

