

LBII-PLUS

LB LB-PLUS
LBII-PLUS

LB-PLUS

LBII-PLUS

LBII-PLUS

LBII-PLUS
LBII-PLUS

RC2

HANBELL

LB

II

XXX

X

X

PLUS



-
-
-
-
-
-


LBII-PLUS

380V/50Hz

PWS



HANBELL

R22



LBII-PLUS

LBII-PLUS




LBII-100~280-PLUS

LBII-360~410-PLUS



LBII



LBII-PLUS

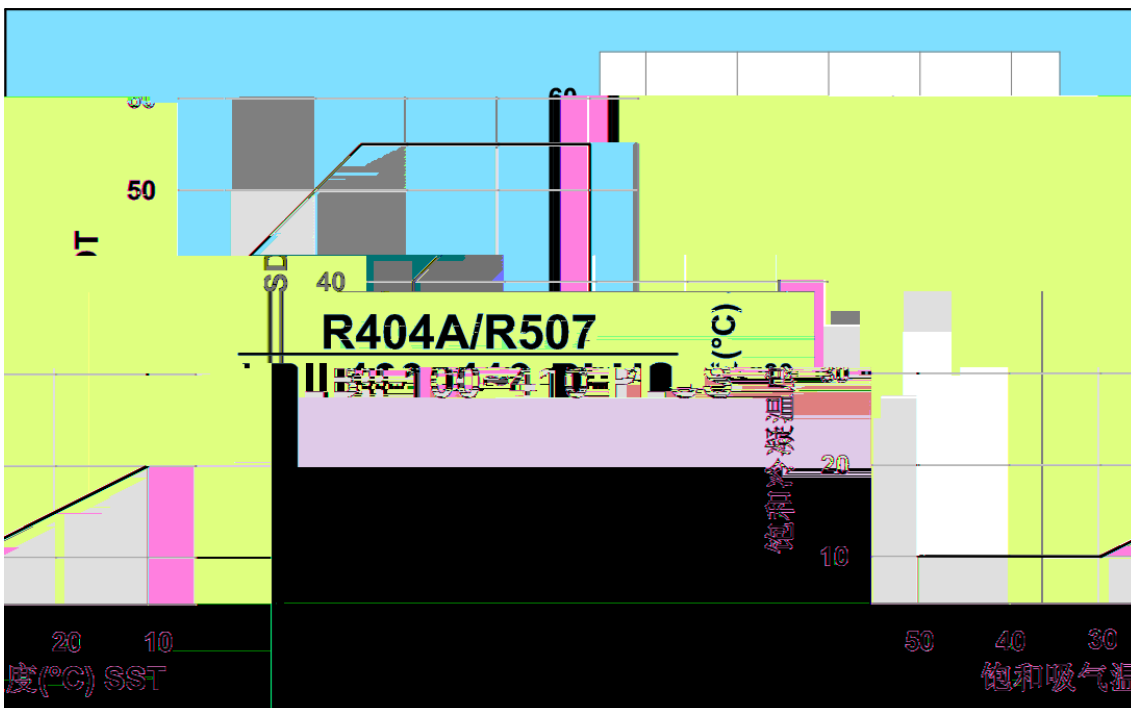
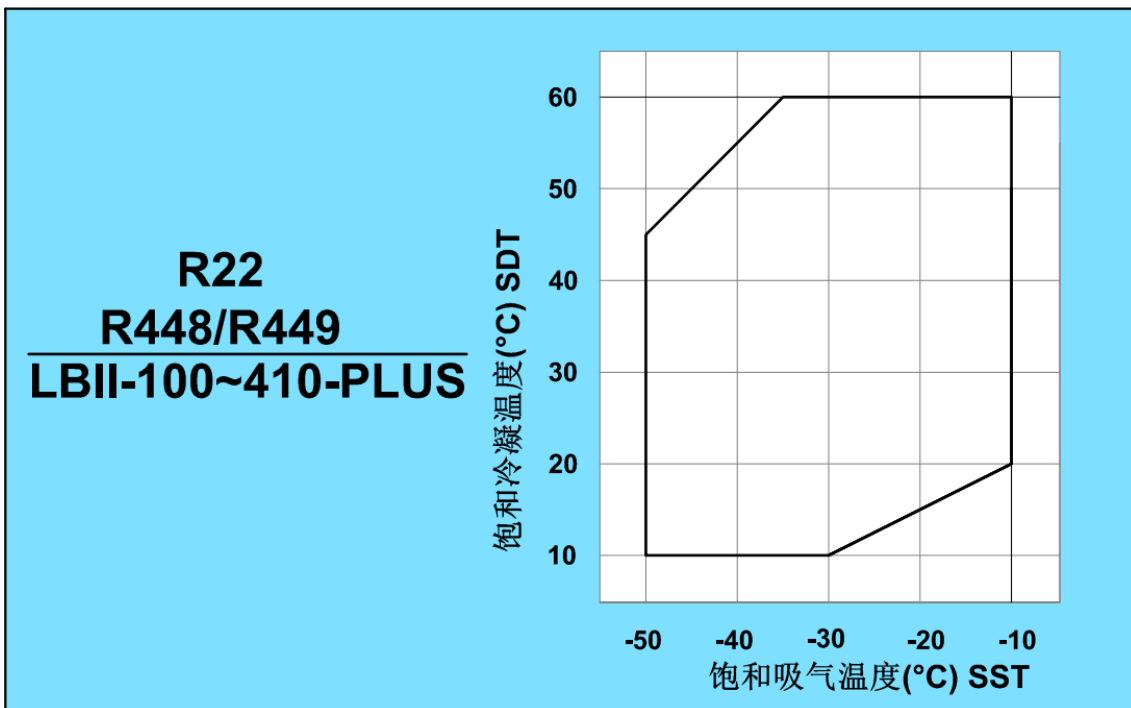
LB-PLUS

(-PLUS)												
	50Hz m ³ /h	50Hz r/min			(V) 50Hz			L	W	bar	Kg	
LBII-100/ LBII-100-P	106	2950	3 2		380	F	PTC +NTC	4.5	300	35	248/233	
LBII-140/ LBII-140-P	139							7			290/275	
LBII-180/ LBII-180-P	179							7.5			310/295	
LBII-200/ LBII-200-P	198							10			440/420	
LBII-230/ LBII-230-P	224							10			460/440	
LBII-250/ LBII-250-P	257							10.5			464/446	
LBII-280/ LBII-280-P	275							11			474/454	
LBII-360-P	366							-			-	370
LBII-410-P	416							-			-	416

-P

HANBELL

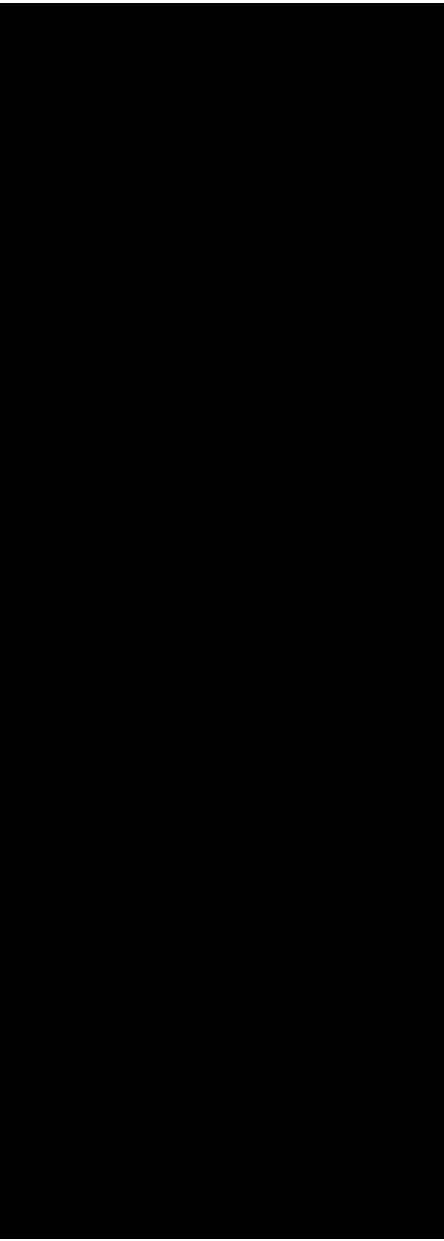
/



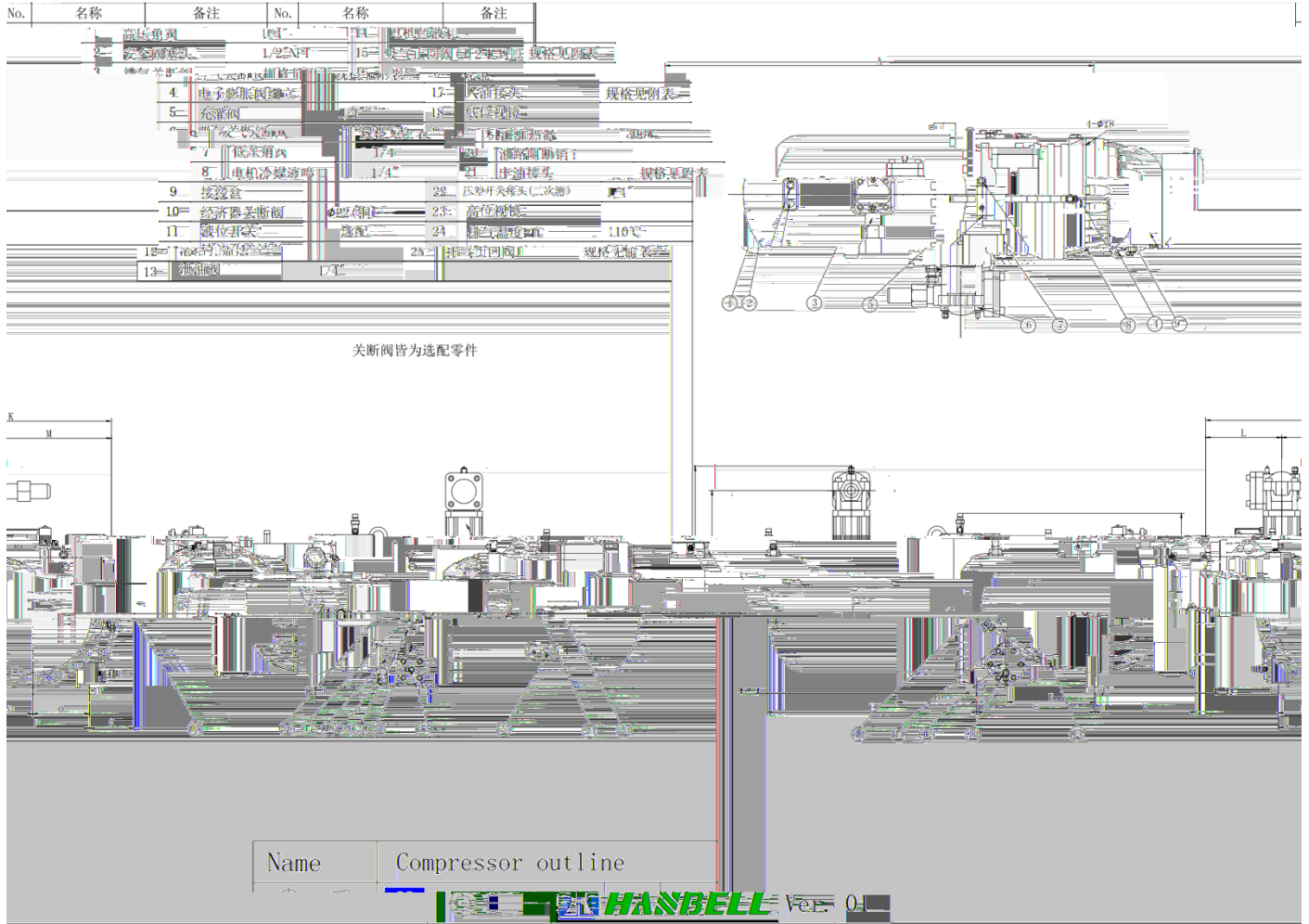
LBII-PLUS R22		ECO _380V 50HZ					
	SDT	35			45		
	SST	-45	-35	-28	-45	-35	-28
LBII-100-(P)-PLUS	kw	16.8	27.4	37.0	14.9	25.5	36.2
	kw	17.6	18.8	19.6	20.9	23.0	24.2
	COP	0.95	1.46	1.89	0.71	1.11	1.50
LBII-140-(P)-PLUS	kw	21.7	36.0	51.4	20.0	34.0	47.3
	kw	22.4	24.6	26.5	27.6	30.3	31.6
	COP	0.96	1.47	1.94	0.72	1.12	1.50
LBII-180-(P)-PLUS	kw	25.7	42.6	61.2	23.9	40.6	54.9
	kw	26.5	28.8	31.1	32.8	36.0	36.6
	COP	0.97	1.48	1.97	0.73	1.13	1.50
LBII-200-(P)-PLUS	kw	29.8	49.2	70.7	27.7	47.0	63.5
	kw	30.5	33.0	35.7	37.7	41.4	42.0
	COP	0.98	1.49	1.98	0.73	1.14	1.51
LBII-230-(P)-PLUS	kw	34.1	56.4	81.6	31.9	52.7	72.2
	kw	34.5	37.1	40.3	42.9	46.2	46.9
	COP	0.99	1.52	2.03	0.74	1.14	1.54
LBII-250-(P)-PLUS	kw	39.3	64.7	89.8	35.3	60.9	83.2
	kw	36.5	40.0	43.2	46.5	49.9	51.9
	COP	1.08	1.62	2.08	0.76	1.22	1.60
LBII-280-(P)-PLUS	kw	44.8	72.9	100.6	40.3	68.6	94.7
	kw	40.1	45.1	48.2	52.3	55.6	58.5
	COP	1.12	1.62	2.09	0.77	1.23	1.62
LBII-360-PLUS	kw	58.8	96.9	135.4	53.8	87.1	125.2
	kw	50.4	59.6	64.2	69.3	70.4	76.7
	COP	1.17	1.63	2.11	0.78	1.24	1.63
LBII-410-PLUS	kw	69.5	109.7	147.6	60.8	100.1	137.5
	kw	59.3	64.7	69.6	70.7	77.8	82.3
	COP	1.17	1.70	2.12	0.86	1.29	1.67

E) □ □

LBII-PLUS R507		ECO _380V 50HZ					
	SDT	35			45		
	SST	-45	-35	-28	-45	-35	-28
LBII-100-(P)-PLUS	kw	19.8	31.6	41.8	16.9	28.3	39.2
	kw	21.6	23.1	24.0	25.9	28.5	30.0
	GOP	0.92	1.37	1.74	0.65	0.99	1.31
LBII-140-(P)-PLUS	kw	25.7	41.5	58.1	22.7	37.7	49.6
	kw	27.4	30.2	32.6	34.2	37.6	39.3
	GOP	0.94	1.38	1.78	0.66	1.00	1.26
LBII-180-(P)-PLUS	kw	30.5	49.1	69.2	27.1	45.0	57.6
	kw	32.5	35.4	38.2	40.7	44.6	45.7
	GOP	0.94	1.39	1.81	0.67	1.01	E) 26



LBII-100~280-PLUS



	3.	6.	15.	17.	21.	25.
LBII-100-PLUS	1 1/2"	2"	2"	3/8"	3/8"	1 1/2"
LBII-140-PLUS	1 1/2"	2"	2"	3/8"	3/8"	1 1/2"
LBII-180-PLUS	1 1/2"	2"	2"	3/8"	3/8"	1 1/2"
LBII-200-PLUS	2"	3"	3"	5/8"	5/8"	2"
LBII-230~280-PLUS	2"	3"	3"	5/8"	5/8"	2"

mm

	A	B	C	D	E	F	G	H	I	J	K	L	M	N	O	P	Q
LBII-100-PLUS	1159	634	573	248	252	523	338	303	395	511	552	222	330	148	152	300	96
LBII-140-PLUS	1199	651	578	256	261	553	339	285	403	515	590	247	343	173	177	350	77
LBII-180-PLUS	1263	643	581	256	327	553	405	306	402	530	584	247	337	173	177	350	77
LBII-200-PLUS	1413	749	668	262	288	690	390	332	450	593	662	251	411	168	182	350	146
LBII-230~280-PLUS	1463	749	668	267	313	694	411	341	483	617	684	262	423	178	208	386	137

LBII-100P~280P-PLUS

	3.	5.	13.	14.	16.
LBII-100P-PLUS	1 1/2"	2"	1 1/2"	2"	3/8"
LBII-140P-PLUS	1 1/2"	2"			

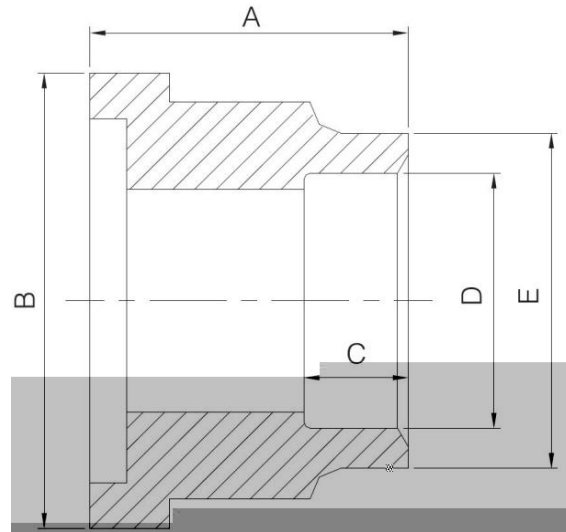
LBII-360P&410P-PLUS



mm

	A	B	C	D	E	F	G	H	I	J	K	L	M	N	O	P	Q	R
LBII-360P-PLUS	1122	927	443	301	397	147	98	495	343	383	538	927	539	388	180	180	228	360
LBII-410P-PLUS	1221	950	408	327	397	156	106	576	343	463	545	950	544	406	180	180	228	360

LBII



			A	B	C	D	E
LBII-100- (P) -PLUS		1 5/8"	42	75	35	42	52
		1 1/2"				49.3	64
LBII-140- (P) -PLUS		2 1/8"	50	90	30	55	65
LBII-180- (P) -PLUS		2"				61.3	74
LBII-200- (P) -PLUS		2 1/8"	50	90	30	55	65
LBII-230- (P) -PLUS		2"				61.3	74
LBII-250- (P) -PLUS		3 1/8"	66	120	45	80.5	90
LBII-280- (P) -PLUS		3"				90.2	103
LBII-360-P-PLUS		2 5/8"	60	110	35	68	77
		2 1/2"				77	90
		3 5/8"	76	145	50	93	103
		4"				110	128
LBII-410-P-PLUS		3 1/8"	66	120	45	80.5	90
		3"				90.2	103
		3 5/8"	76	145	50	93	103
		4"				110	128

8289

Shanghai Hanbell Precise Machinery Co.,Ltd.

Add No.8289,Tingfeng Road,Fengjing Area,Jinshan District,Shanghai

Tel 021- 57350280

Fax 021- 31106889 /57352004

108

Shanghai Hanbell Precise Machinery Co.,Ltd.Fengjing Factory NO.1

Add No.108,Jiangong Road,Fengjing Area,Jinshan District,Shanghai

Tel 021- 57350280

Fax 021- 31106805

2222 U 4

Shanghai Hanbell Precise Machinery Co.,Ltd.Jinan Branch office

Add No.4 Building, Liandong Ugu Enterprise Port, No. 2222, Soq n/ ldhangha/ ê shhc 021- 5735